



**Fraunhofer** Institut  
Techno- und  
Wirtschaftsmathematik

N. Ettrich

Generation of surface elevation  
models for urban drainage simulation

© Fraunhofer-Institut für Techno- und Wirtschaftsmathematik ITWM 2005

ISSN 1434-9973

Bericht 79 (2005)

Alle Rechte vorbehalten. Ohne ausdrückliche, schriftliche Genehmigung des Herausgebers ist es nicht gestattet, das Buch oder Teile daraus in irgendeiner Form durch Fotokopie, Mikrofilm oder andere Verfahren zu reproduzieren oder in eine für Maschinen, insbesondere Datenverarbeitungsanlagen, verwendbare Sprache zu übertragen. Dasselbe gilt für das Recht der öffentlichen Wiedergabe.

Warennamen werden ohne Gewährleistung der freien Verwendbarkeit benutzt.

Die Veröffentlichungen in der Berichtsreihe des Fraunhofer ITWM können bezogen werden über:

Fraunhofer-Institut für Techno- und  
Wirtschaftsmathematik ITWM  
Gottlieb-Daimler-Straße, Geb. 49

67663 Kaiserslautern  
Germany

Telefon: +49 (0) 6 31/2 05-32 42  
Telefax: +49 (0) 6 31/2 05-41 39  
E-Mail: [info@itwm.fraunhofer.de](mailto:info@itwm.fraunhofer.de)  
Internet: [www.itwm.fraunhofer.de](http://www.itwm.fraunhofer.de)

# Vorwort

Das Tätigkeitsfeld des Fraunhofer Instituts für Techno- und Wirtschaftsmathematik ITWM umfasst anwendungsnahe Grundlagenforschung, angewandte Forschung sowie Beratung und kundenspezifische Lösungen auf allen Gebieten, die für Techno- und Wirtschaftsmathematik bedeutsam sind.

In der Reihe »Berichte des Fraunhofer ITWM« soll die Arbeit des Instituts kontinuierlich einer interessierten Öffentlichkeit in Industrie, Wirtschaft und Wissenschaft vorgestellt werden. Durch die enge Verzahnung mit dem Fachbereich Mathematik der Universität Kaiserslautern sowie durch zahlreiche Kooperationen mit internationalen Institutionen und Hochschulen in den Bereichen Ausbildung und Forschung ist ein großes Potenzial für Forschungsberichte vorhanden. In die Berichtreihe sollen sowohl hervorragende Diplom- und Projektarbeiten und Dissertationen als auch Forschungsberichte der Institutsmitarbeiter und Institutsgäste zu aktuellen Fragen der Techno- und Wirtschaftsmathematik aufgenommen werden.

Darüberhinaus bietet die Reihe ein Forum für die Berichterstattung über die zahlreichen Kooperationsprojekte des Instituts mit Partnern aus Industrie und Wirtschaft.

Berichterstattung heißt hier Dokumentation darüber, wie aktuelle Ergebnisse aus mathematischer Forschungs- und Entwicklungsarbeit in industrielle Anwendungen und Softwareprodukte transferiert werden, und wie umgekehrt Probleme der Praxis neue interessante mathematische Fragestellungen generieren.

A handwritten signature in black ink, reading "Dieter Prätzel-Wolters". The signature is fluid and cursive, with the first name "Dieter" and last name "Prätzel-Wolters" clearly distinguishable.

Prof. Dr. Dieter Prätzel-Wolters  
Institutsleiter

Kaiserslautern, im Juni 2001





**Fraunhofer** Institut  
Techno- und  
Wirtschaftsmathematik

# Generation of surface elevation models for urban drainage simulation

Dr. Norman Ettrich  
Fraunhofer-Institut für Techno- und Wirtschaftsmathematik ITWM  
Abteilung »Strömungen und komplexe Strukturen«

E-Mail: [ettrich@itwm.fraunhofer.de](mailto:ettrich@itwm.fraunhofer.de)

2005-07-19



## 1 Abstract

Traditional methods fail for the purpose of simulating the complete flow process in urban areas as a consequence of heavy rainfall and as required by the European Standard EN-752 since the bi-directional coupling between sewer and surface is not properly handled. The methodology, developed in the BMBF/EUREKA-project RisUrSim, solves this problem by carrying out the runoff on the basis of shallow water equations solved on high-resolution surface grids. Exchange nodes between the sewer and the surface, like inlets and manholes, are located in the computational grid and water leaving the sewer in case of surcharge is further distributed on the surface.

So far, it has been a problem to get the dense topographical information needed to build models suitable for hydrodynamic runoff calculation in urban areas. Recent airborne data collection methods like laser scanning, however, offer a great chance to economically gather densely sampled input data. This paper studies the potential of such laser-scan data sets for urban water hydrodynamics.

Keywords:

Flooding, simulation, urban elevation models, laser scanning

## 2 Introduction

Simulating the runoff of water as a consequence of strong rainfall is needed for flooding risk estimation and dimensioning of drainage systems (Schmitt et al., 2004). Complexity of the geometry and of the topography of the area under investigation, the inherent non-linearity of the process, or the need for the bi-directional coupling between runoff on the surface and flow through a subsurface urban sewer system require hydrodynamic simulation based on shallow water equations working on a grid representation of the surface (Ettrich, 2003). The most important quantity that needs to be assigned to all cells of the grid is the height because it is mainly the gradient of height that influences the pro-

propagation of water. Heights are generally measured at individual points. Relatively few data points can model smooth topography of rural areas with only few human-made objects. Urban areas, in contrast, are very much different. The propagation of water is highly influenced by objects like walls, boundaries of houses, and also curbs, the latter in particular requiring spatially very densely sampled data points with highly accurate height values to resolve subtle elevation differences.

So far it has been a problem to measure these data points in urban areas with sufficient quality. Current model representations of urban areas are therefore quite rough, mixing elevations of pavements and streets, often even not removing the houses from the calculation surface and the typical grid size of 1 – 10 m per direction can not at all account for the degree of detail necessary.

Laser-scanning is an airborne measurement technique that provides spatially highly sampled data points with accurate height information and that is more and more applied to hydrological problems with accordingly refined data processing methodologies (e. g. Briese and Attwenger, 2005). Application to urban areas with the scale of detail needed for the purpose described, however, has not been realized. Typical values for the accuracy of the laser-scan data sets are one point per m<sup>2</sup> with a promised accuracy on height of 10-15 cm after initial pre-processing. These values also apply to the laser-scan data set of Hamburg. The Landesbetrieb Geoinformation und Vermessung, Hamburg was so kind to provide part of the laser-scan data set to study its potential for generating models for the simulation of runoff of water in urban areas.

Specification of the data, covering a 2 km \* 2 km part of Hamburg St. Pauli:

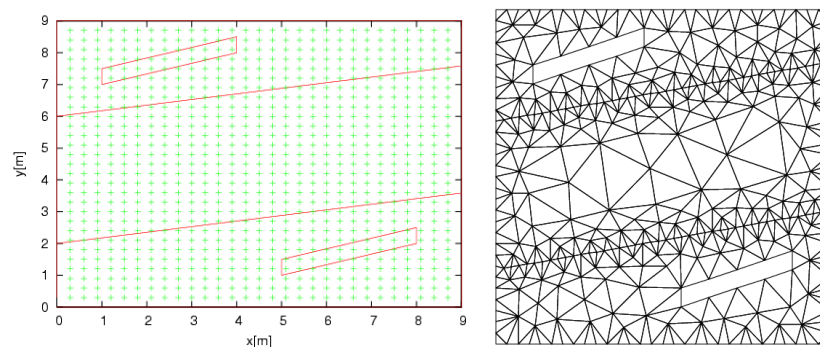
- 2.827217 pre-processed laser-scan points with x, y, z coordinates
- Excerpts from the land register, including polygonal information on – among others – curbs, border lines of houses, borders of footpaths and of bicycle-paths
- orthophotos



### 3 Model building strategy

Good applicability of the process of generating triangular grids for larger areas calls for a strategy that requires a minimum of hand-made user editing and for widely automated pre-processing of the data. Extensive re-picking of polygonal input and the need for proper orientation of polygons are prohibitive processing steps. The following synthetic example discusses the model building strategy chosen.

Figure 1:  
Left: Input data for  
synthetic example.  
Right: Generated  
mesh.



Typical input is shown in Figure 1 for a synthetic data example. Only the green data points bear information on height ( $z$ ) and possibly information on other properties needed to parameterize the model for runoff simulation. Unlike in this figure, these nodes may be irregularly distributed.

Red lines show the input polygons that constrain the meshing process. The requirement to the triangulation is that the shape of the polygons must be preserved and that elevation differences left and right of the polygonal edges must not be smeared. No  $z$ -value is given to the points along the red polygons. Polygons may have different meanings. The outer red line is closed and represents the boundary of the area to be meshed. Unconnected areas can be defined by inputting more than one boundary polygon. The other two closed polygons (upper left and lower right) describe inner boundaries, i. e. holes. These areas are removed from the total area; in reality such areas can represent houses and all other objects that are absolute obstacles for the flow of water. A closed polygon is identified as a hole by assigning one inner point to that polygon. Finding these inner points, however, is carried out automatically for general, i. e. non-convex areas. The two remaining straight, non-closed lines may define curbs.

The pre-processing involves setting polygonal nodes being closer together than a minimum threshold identical and re-sampling of the polygons to an approximately constant user-defined spatial sampling interval. Both steps help to avoid generating too small triangles.

The green nodes between both curbs have height  $z=0$  m; above the upper and below the lower curb  $z=0.1$  m. No information on orientation of the polygons is necessary.

Figure 1, right, shows the triangular mesh for the input described, using the 2D mesh generator developed by Shewchuk (1996). In order to satisfy the minimum angle condition, here chosen to 20 degree, additional points are inserted by the triangulator. This constrains the size of the triangles. Improving the mesh quality by stronger constraining the minimum angle to 30 degree quickly results in an increase of the number of mesh triangles, in this case from about 600 triangles to 1200 triangles. This means that for practical applications one has to find a compromise by choosing a possibly slightly too low minimum angle. Additional dependencies for the size of the triangles, like dependencies on steepness of elevation gradient or any other local complexity measure, or a fixed minimum triangle size can also be applied.

Figure 2:  
Topographical  
model of the exam-  
ple from Figure 1;  
no smoothing ap-  
plied.

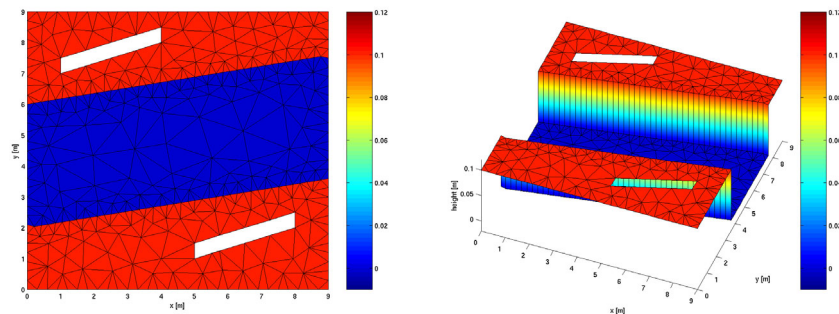


Figure 2 shows the triangular mesh color-coded by the heights assigned to the triangles. For each triangle, the height is obtained by averaging the heights of all input nodes that are located inside that triangle. This averaging already involves some smoothing with an operator length depending on the triangle size. If stronger smoothing is required or if a triangle does not contain any node nodes located inside neighboring triangles are considered. Only triangles that connect to the current triangle across edges that do not lie on segments of the input polygons are valid neighbors in this process. As a result, sharp contrast lines (as the curb in Figure 2) are preserved.

Figure 3 for a perturbation in  $z$  and Figure 6 for the strong perturbation in  $x, y$  shown in Figure 5 demonstrates that the proposed smoothing is suited to reduce the short wavelength perturbations of noisy data without smearing the

structure. Figure 4 demonstrates the importance of a perfect definition of curb polygons. Here the connecting element of the upper polygon to the left border is missing. Consequently, the smoothing process results in mixing of heights from both sides of the curb through this gap.

Figure 3:  
Topographical  
model for the per-  
turbed ( $\pm 2.5$  cm in  
z) input data. Left:  
without smoothing;  
right: with 1 m  
smoothing length.

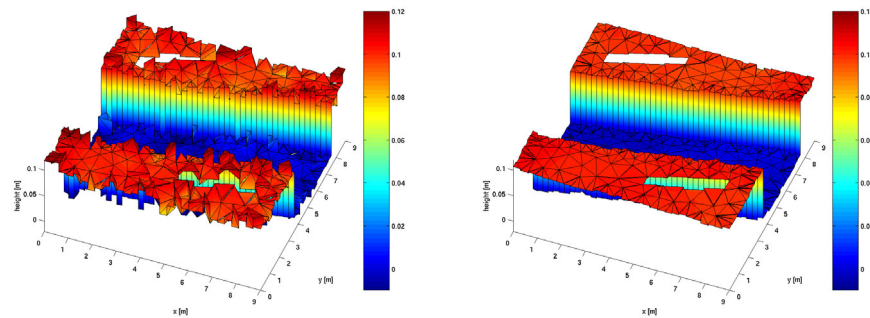


Figure 4:  
Same as Figure 3,  
right, but with an in-  
complete defini-  
tion of the upper curb  
polygon that is  
not properly con-  
nected to the border  
on its left end.

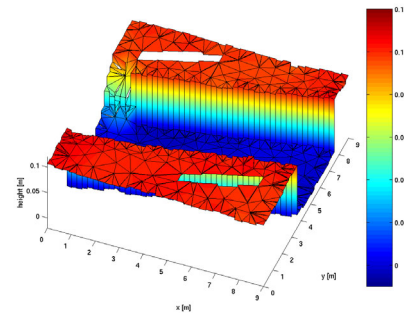


Figure 5:  
Data nodes per-  
turbed by  $\pm 50$  cm  
in x, y. Compare to  
Figure 1.

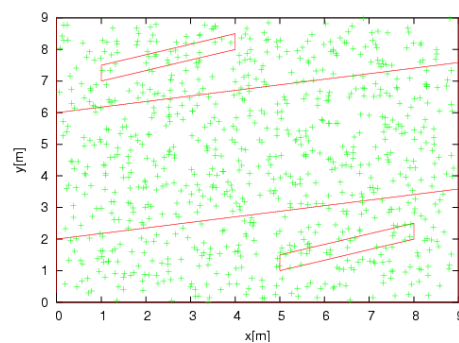
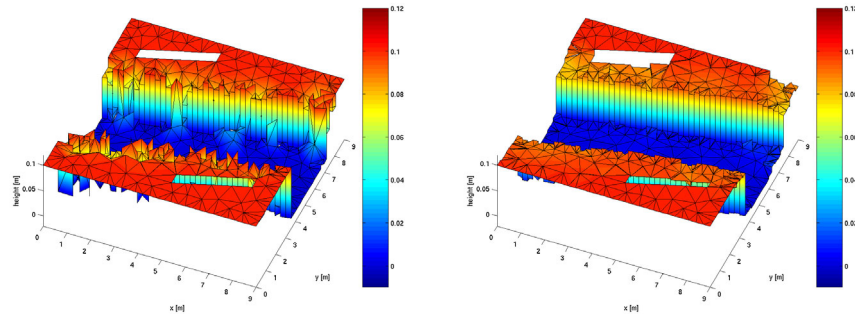


Figure 6:  
Topographical  
model for the per-  
turbed ( $\pm 50$  cm in  
x, y) input data. Left:  
without smoothing,  
right: with 1 m  
smoothing length.



## 4 Application to Hamburg data

### 4.1 Test 1

The first test using the real data provided repeats the synthetic curb test of the preceding section. It investigates whether the algorithm also succeeds to model the pavement-street-pavement structure from noisy real data.

Figure 7 shows the input to this test. The color-coding of the data points reveals the degree of noise on the heights. Without smoothing the triangulated area can for sure not be used for surface runoff simulation (Figure 8, left figures). Smoothing, however, constraint by the curb lines, allows recovering the longer wavelength of the model without smearing the contours (Figure 8, right figures).

Figure 7:  
Data points, two  
curb lines (blue), and  
a boundary polygon  
(orange) for a street  
from the Hamburg  
data.

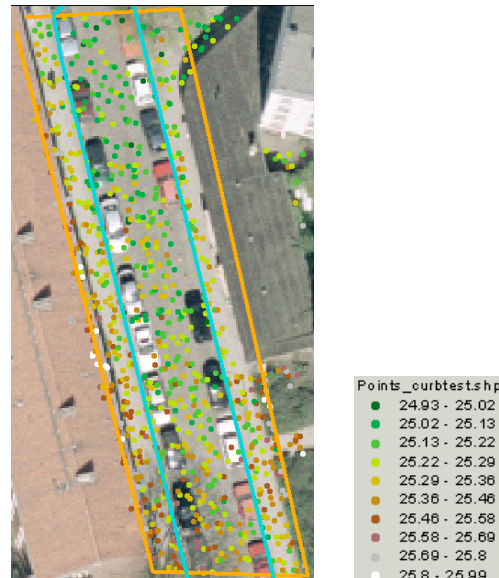
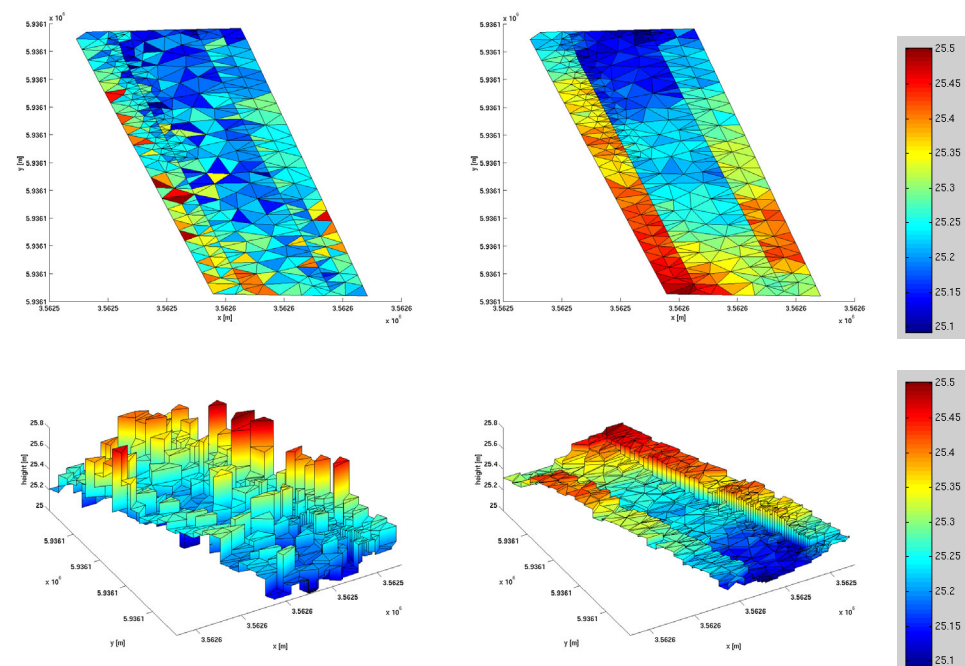


Figure 8:  
Triangulated area of  
the input of Figure 7  
from two different  
perspectives; left:  
unsmoothed, right:  
smoothed.



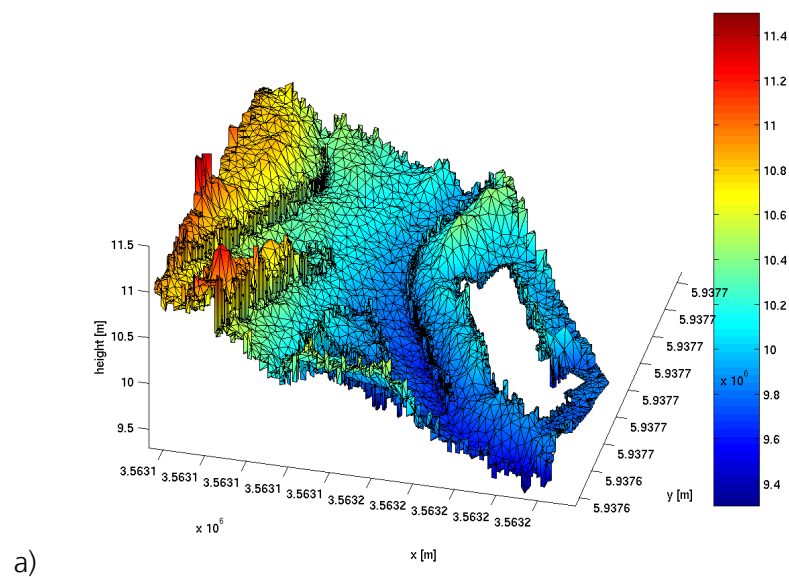
## 4.2 Test 2

Figure 10 shows the surface grid in dependence on the length of the smoothing operator for the area shown in Figure 9. Note that even a smoothing length of 0 m involves some smoothing of the heights (as discussed in section 3). For this model, 1 m smoothing length is probably long enough (figure b). 4 m smoothing (figure c) length does not improve the representation of the street very much but lets the pavement appear less rugged.

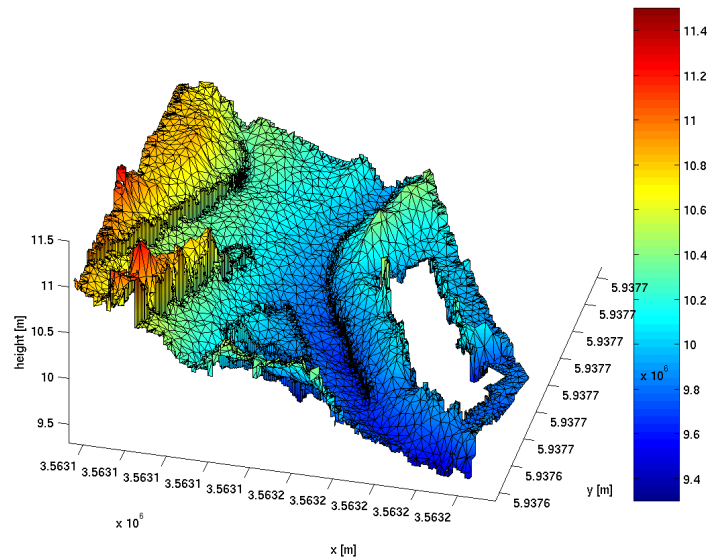
Figure 9:  
Photo and constrain-  
ing polygons for test  
2; border of the area  
(purple), house  
boundary (blue),  
curb lines (pink),  
footpath borders  
(green), bicycle path  
(light blue).



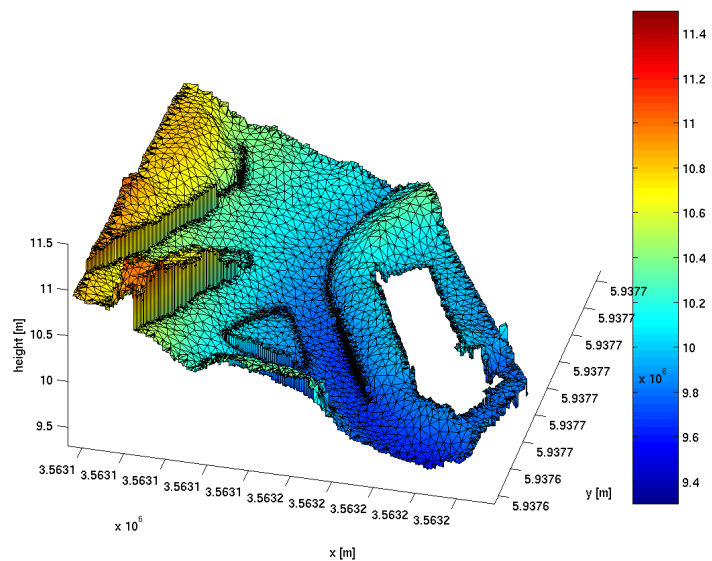
Figure 10:  
Surface grid of the  
urban area shown in  
Figure 9; no  
smoothing applied  
(a), 1 m smoothing  
operator (b), 4 m  
smoothing length  
(c).







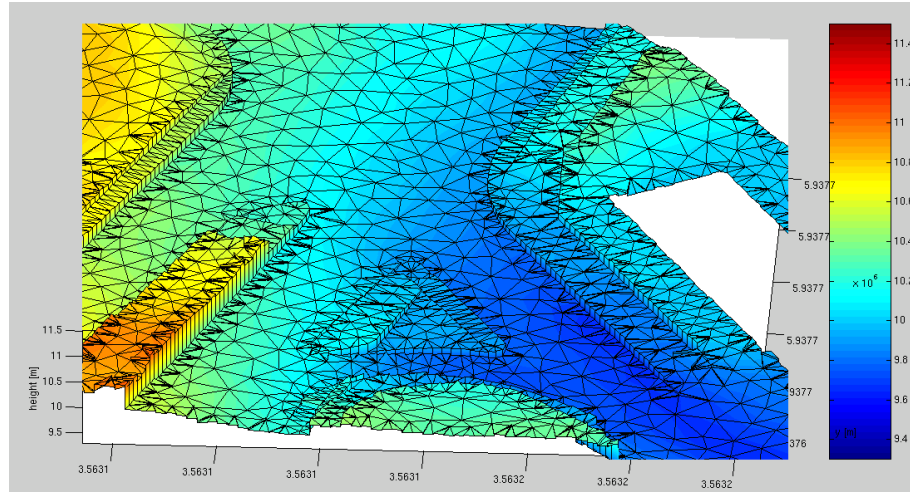
b)



c)

Interpreting Figure 9, however, yields that the area between the right curb and the house does not only consists of pavement but also of stripes covered by grass and surrounded by hedges. Heights of both regimes should not be mixed, as it is the case in Figure 10. Not all elements (the curbs and the houses only) shown in Figure 9 were considered to build this initial model. A severe improvement is achieved by including all elements. The resulting triangulated model of Figure 11 represents the pavements well and reveals the differences in height between pavements, bicycle paths and street.

Figure 11:  
Detailed triangulated elevation  
model of the area  
shown in Figure 9;  
based on all polygonal  
input available.  
Note that the orientation  
of the figure  
is different from the  
preceding figures;  
the vertical axis is  
not as exaggerated  
here.



### 4.3 Test 3

The final test is on a bigger sub-area of the size 1 km by 1 km, as shown in Figure 12. About 650,000 laser-scan points are located inside this area and bear information on height (Figure 14). The area is fairly but not completely flat with heights between 17.8 m and 30.0 m.

#### 4.3.1 The elevation model

Pre-processing following the line described in section 3 and triangulation produced a grid of about 350,000 triangles. A small part of it is displayed in Figure 15 (while resolution forbids displaying the whole grid). Heights are assigned to the triangles by applying a 5 m smoothing operator. Figure 16- Figure 22 display the final elevation model with different magnifications and perspectives. The color code from Figure 16 is valid for all figures.

Even the total view of Figure 16 shows sub-areas with extremely good vertical resolution. The discrimination between street and pavement and the visibility of traffic islands is good in particular in the lower left quadrant (see also the zoom view of Figure 17). The data quality seems to slightly degrade against the opposite upper right corner. Figure 17 (rotated by about 180 deg in azimuth against the view of Figure 16) supports this impression. The stripy pattern along the border is an edge effect due to a too narrow selection of the subset of laser-scan points to be considered in the current calculation.



Figure 12:  
Subarea of Ham-  
burg-St. Pauli of size  
1 km x 1 km. Input  
to the model build-  
ing are – in addition  
to the laser-scan  
points (see Figure  
14) – polygons  
describing houses  
and compounds of  
houses (red), poly-  
gons describing  
curbs (yellow), and  
the outer border  
(blue).



Figure 13:  
Two magnifications  
of Figure 12.



In contrast to the well-modeled curb lines one can detect areas with smoothed contours. Examples are the railway tracks on the left side of Figure 16 and the stairs into the underground (depression on the lower edge of Figure 18 and right of the football field in Figure 17). Including the corresponding surround-

ing polygons in the model generation process would avoid this smoothing. The same applies to the representation of the pavements. The strong zoom of Figure 19 (compare to Figure 18) again shows the good discrimination between street and pavement area. The pavement, however, shows some undulations that are due to mixing heights from the pavement itself and the parallel grassy stripe (see photos of Figure 13). The polygon separating both from each other would produce a better pavement. According to Figure 20, right, this polygon is available; see yellow highlighted line. However, it is part of a more extended polygon that surrounds a plot of land. Re-picking only the part that is needed would be necessary in this case. Also shown in Figure 20 is the model on the central green area that is improved if the green polygons denoting footpaths are included.

Figure 21 and Figure 22 again show good and sharp discrimination of streets and objects with slightly higher elevation, like curbs. Elevation differences of about 10 cm and less are resolved. These elongated objects, which have an important guiding effect on the runoff of water, can therefore be properly included into models used for more reliable runoff simulation in urban areas.

Figure 14:  
Colors represent  
height on 650,000  
individual data  
points for the area  
as shown in Figure  
12.





Figure 15:  
Small part of the  
grid of the total  
area. Angles are  
limited to a 20  
degree minimum.

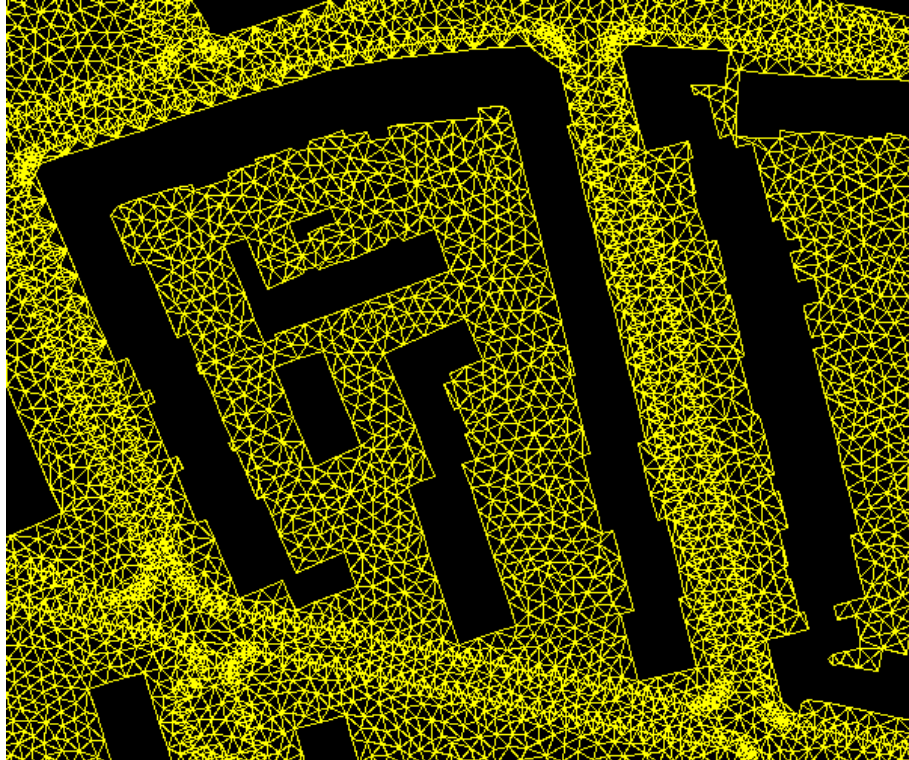
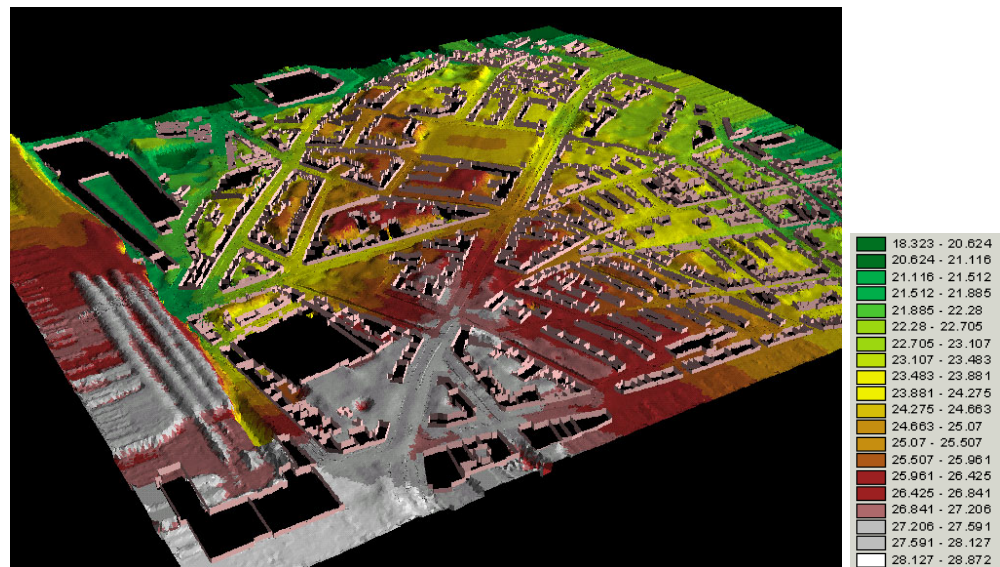


Figure 16:  
Color representation  
of the final elevation  
model. Houses are  
displayed by red  
walls surrounding  
the black areas that  
are removed from  
the meshed surface.  
Edges of the trian-  
gles are not shown.  
Vertical faces of  
curbs are repre-  
sented by 4point  
polygons (partially  
visible in the follow-  
ing figures). The  
vertical exaggeration  
factor is 7.



elevation [m]

Figure 17:  
See Figure 16,  
rotated by about  
180 deg. azimuth  
compared to Figure  
16.



Figure 18:  
See Figure 16; zoom  
into part of the  
lower left quadrant  
of Figure 16.

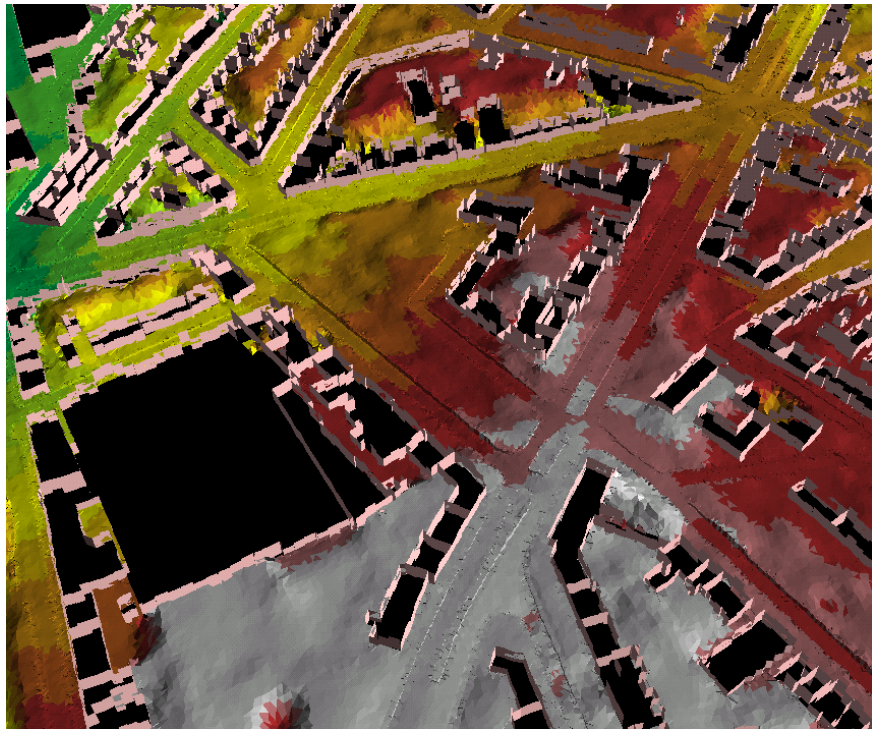




Figure 19:  
See Figure 16; zoom  
of Figure 17.

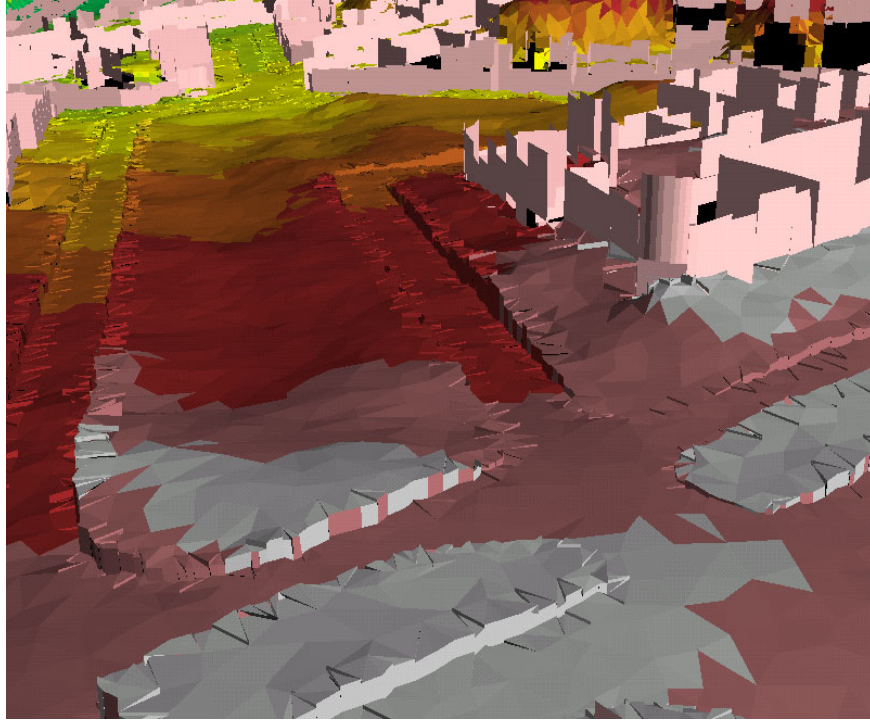


Figure 20:  
Compare to Figure  
19; for this model  
also the green  
polygons bordering  
footpaths are con-  
sidered.

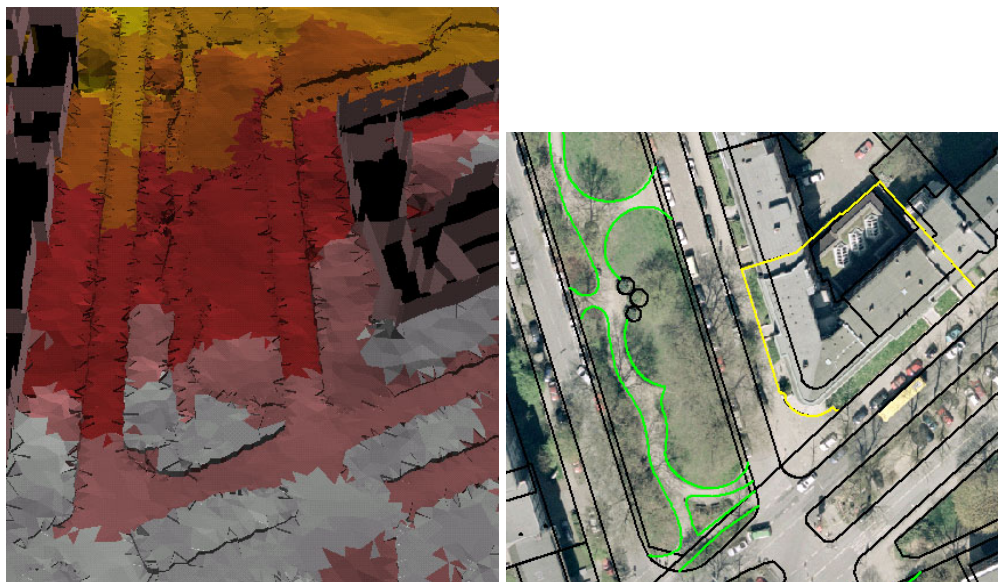


Figure 21:  
See Figure 16; zoom  
into part of the  
upper left quadrant  
of Figure 16.

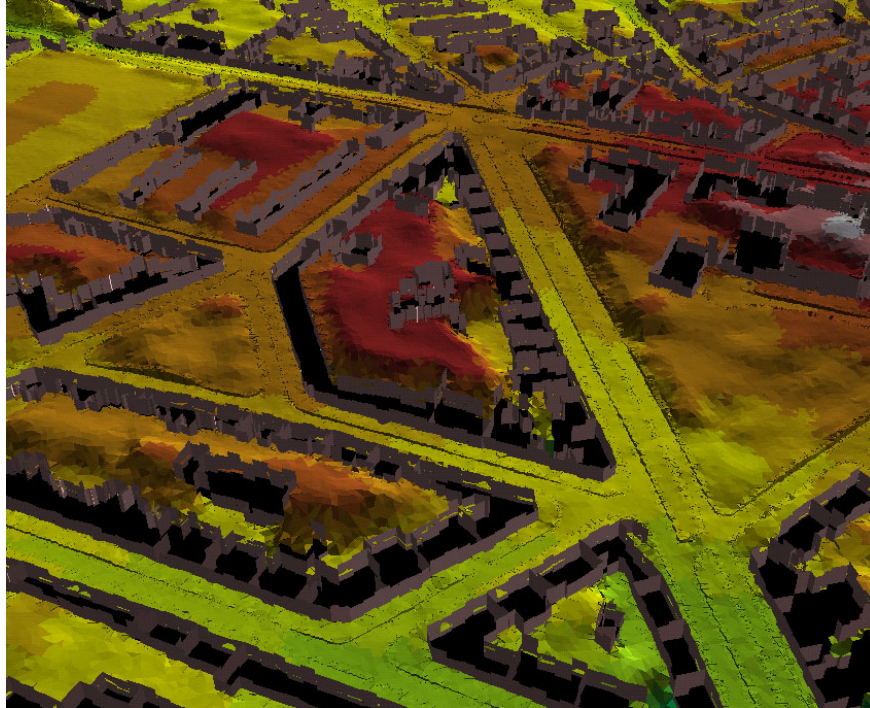
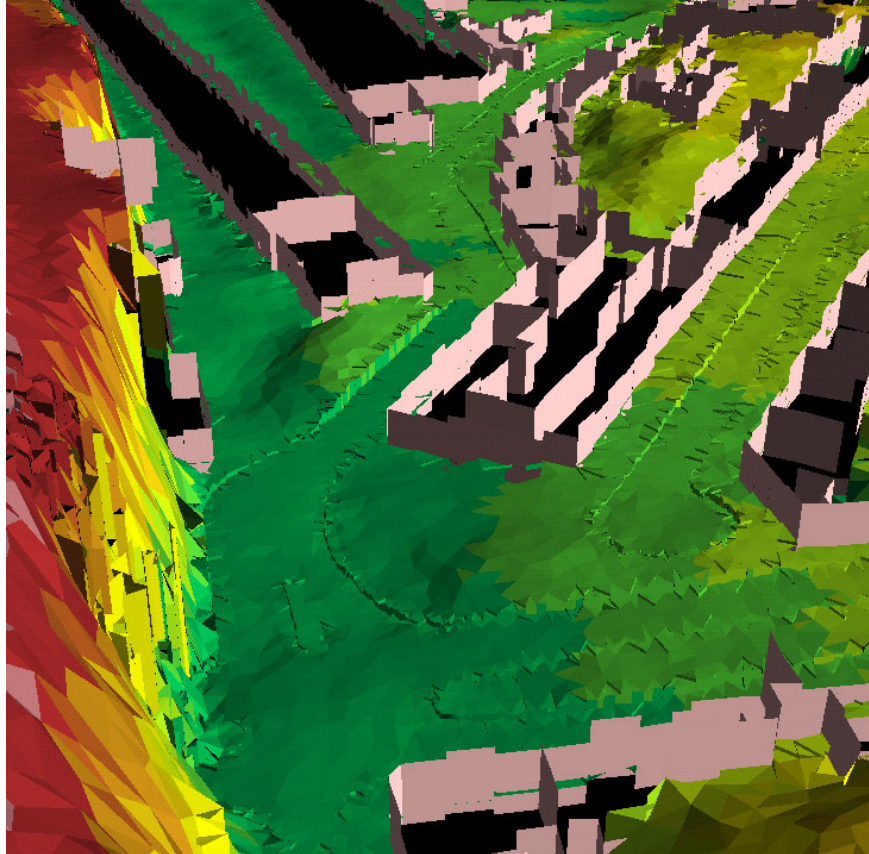


Figure 22:  
See Figure 16; detail  
of the upper left  
quadrant of Figure  
16.



#### 4.3.2 Simulation of the runoff of water

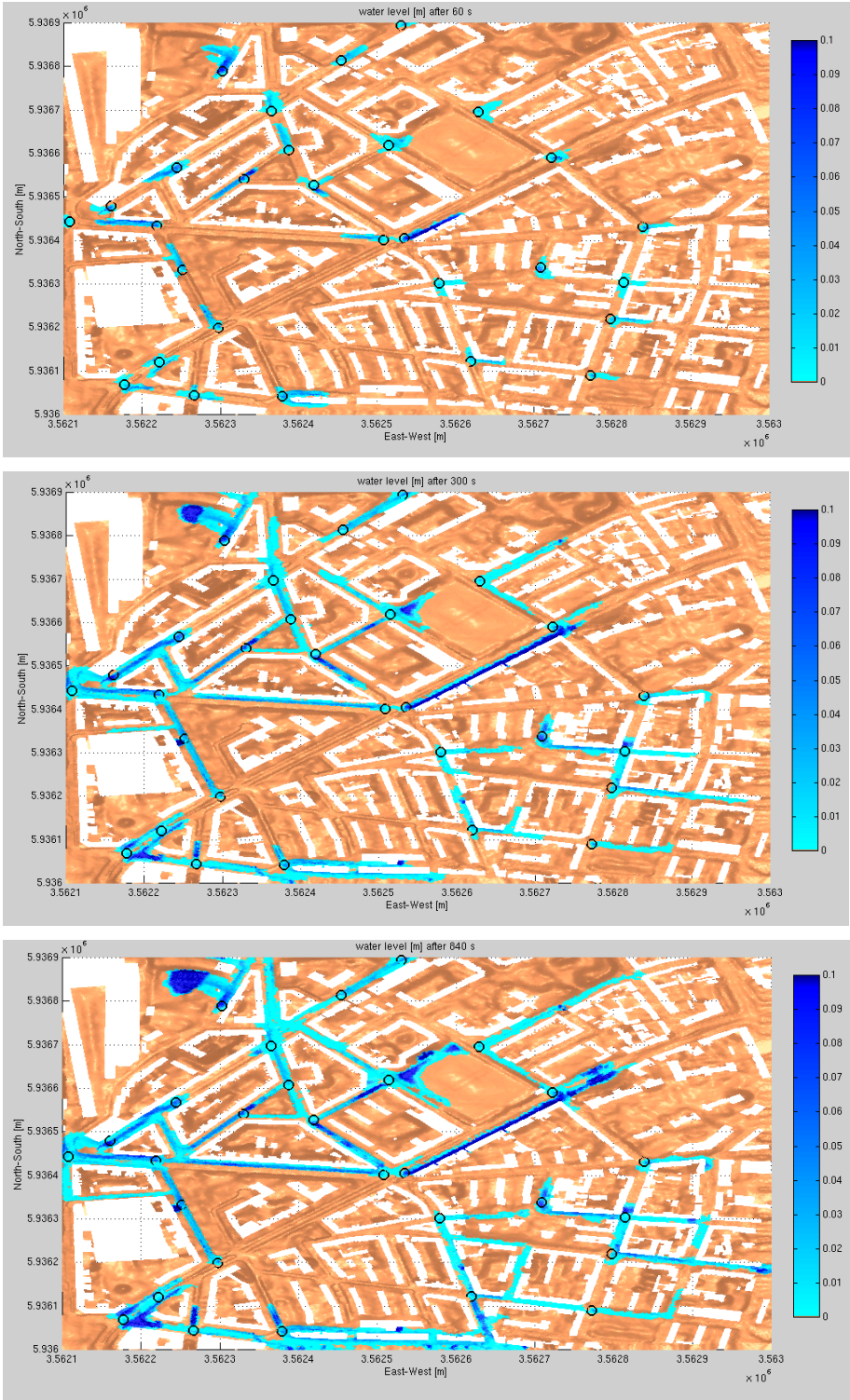
The model presented in the preceding section will now be used for the simulation of the surface runoff. For that purpose 30 fictitious manholes are implemented that should all run under surcharge conditions with output rates between  $0.3 \text{ m}^3/\text{s}$  and  $1.6 \text{ m}^3/\text{s}$ . No rainfall is included in order to make the flow of water better visible.

The three figures of Figure 23 show the result of applying ITWM's RisoSurf software to the model discussed in section 4.3.1. RisoSurf solves simplified 2D shallow water equations on triangular grids. The steering effect of the curb lines is clearly visible.

The high accuracy of the model will result in more reliable water level calculated on the street and more accurate input of water into the sewer system.



Figure 23:  
Water levels for  
discrete time steps  
of the runoff simu-  
lation for the model  
shown in Figure 16.





## 5 Conclusion

The laser-scan data of Hamburg St.-Pauli, as provided by Landesbetrieb Geoinformation und Vermessung, Hamburg, and data sets of comparably high quality allow generating models that are suited for accurate simulation of runoff of water based on shallow water equations, e.g. by RisoSurf. Objects like curbs, with large lateral extension but little elevation contrast to the background can be resolved in the model and their important guiding effect on the water can thus be simulated.

Proper pre-processing (in addition to the pre-processing already applied before delivery) of the input elevation data, involving smoothing, and constraining the triangulation by polygons for houses, curbs and others converts the irregularly distributed input data into models where sharp contours are preserved and elevation differences of 10 cm and less are resolved.

The model generation in this feasibility study mainly includes curbs and house polygons as constraining polygonal elements. It was, however, also discussed how additional constraints like polygons for footpaths and bicycle-paths can further improve the model.

Models used for projects for estimating flooding risk for jeopardized (urban) areas can therefore be generated with extremely high level of detail; the actual level used depends on the particular question to be answered. ITWM possesses the technology to build such models and to carry out the runoff simulation. The process of generating models is widely automated and suited to handle areas up to a size of about 2 x 2 km<sup>2</sup>.

## 6 Acknowledgements

We thank Landesbetrieb Geoinformation und Vermessung, Hamburg for providing the data.

## 7 References

- Briese, C. and Attwenger, M., (2005).  
Modellierung dreidimensionaler hydrologisch und hydraulisch relevanter Geländekanten aus hochauflösenden Laser-Scanner-Daten.  
Bundesanstalt für Gewässerkunde, Veranstaltungen 1/2005.
- Ettrich, N. (2003).  
Risikomanagement für urbane Entwässerungssysteme – Simulation und Optimierung (RisUrSim), Oberflächenwasser und Informationsaufbereitung.  
Final report BMBF-project.
- Schmitt, T.G., Thomas, M., Ettrich, N. (2004).  
Analysis and Modeling of Flooding in Urban Drainage Systems.  
Journal of Hydrology, 299, 300-311.
- Shewchuck, J., (1996).  
Triangle: Engineering a 2D quality mesh generator and Delaunay triangulator.  
First workshop on applied computational geometry, 124-133, ACM.

# Published reports of the Fraunhofer ITWM

The PDF-files of the following reports are available under:

**[www.itwm.fraunhofer.de/de/zentral\\_\\_berichte/berichte](http://www.itwm.fraunhofer.de/de/zentral__berichte/berichte)**

1. D. Hietel, K. Steiner, J. Struckmeier

## ***A Finite - Volume Particle Method for Compressible Flows***

We derive a new class of particle methods for conservation laws, which are based on numerical flux functions to model the interactions between moving particles. The derivation is similar to that of classical Finite-Volume methods; except that the fixed grid structure in the Finite-Volume method is substituted by so-called mass packets of particles. We give some numerical results on a shock wave solution for Burgers equation as well as the well-known one-dimensional shock tube problem.

(19 pages, 1998)

2. M. Feldmann, S. Seibold

## ***Damage Diagnosis of Rotors: Application of Hilbert Transform and Multi-Hypothesis Testing***

In this paper, a combined approach to damage diagnosis of rotors is proposed. The intention is to employ signal-based as well as model-based procedures for an improved detection of size and location of the damage. In a first step, Hilbert transform signal processing techniques allow for a computation of the signal envelope and the instantaneous frequency, so that various types of non-linearities due to a damage may be identified and classified based on measured response data. In a second step, a multi-hypothesis bank of Kalman Filters is employed for the detection of the size and location of the damage based on the information of the type of damage provided by the results of the Hilbert transform.

*Keywords:* Hilbert transform, damage diagnosis, Kalman filtering, non-linear dynamics

(23 pages, 1998)

3. Y. Ben-Haim, S. Seibold

## ***Robust Reliability of Diagnostic Multi-Hypothesis Algorithms: Application to Rotating Machinery***

Damage diagnosis based on a bank of Kalman filters, each one conditioned on a specific hypothesized system condition, is a well recognized and powerful diagnostic tool. This multi-hypothesis approach can be applied to a wide range of damage conditions. In this paper, we will focus on the diagnosis of cracks in rotating machinery. The question we address is: how to optimize the multi-hypothesis algorithm with respect to the uncertainty of the spatial form and location of cracks and their resulting dynamic effects. First, we formulate a measure of the reliability of the diagnostic algorithm, and then we discuss modifications of the diagnostic algorithm for the maximization of the reliability. The reliability of a diagnostic algorithm is measured by the amount of uncertainty consistent with no-failure of the diagnosis. Uncertainty is quantitatively represented with convex models.

*Keywords:* Robust reliability, convex models, Kalman filtering, multi-hypothesis diagnosis, rotating machinery, crack diagnosis

(24 pages, 1998)

4. F.-Th. Lentjes, N. Siedow

## ***Three-dimensional Radiative Heat Transfer in Glass Cooling Processes***

For the numerical simulation of 3D radiative heat transfer in glasses and glass melts, practically applicable mathematical methods are needed to handle such problems optimal using workstation class computers.

Since the exact solution would require super-computer capabilities we concentrate on approximate solutions with a high degree of accuracy. The following approaches are studied: 3D diffusion approximations and 3D ray-tracing methods.

(23 pages, 1998)

5. A. Klar, R. Wegener

## ***A hierarchy of models for multilane vehicular traffic Part I: Modeling***

In the present paper multilane models for vehicular traffic are considered. A microscopic multilane model based on reaction thresholds is developed. Based on this model an Enskog like kinetic model is developed. In particular, care is taken to incorporate the correlations between the vehicles. From the kinetic model a fluid dynamic model is derived. The macroscopic coefficients are deduced from the underlying kinetic model. Numerical simulations are presented for all three levels of description in [10]. Moreover, a comparison of the results is given there.

(23 pages, 1998)

## ***Part II: Numerical and stochastic investigations***

In this paper the work presented in [6] is continued. The present paper contains detailed numerical investigations of the models developed there. A numerical method to treat the kinetic equations obtained in [6] are presented and results of the simulations are shown. Moreover, the stochastic correlation model used in [6] is described and investigated in more detail.

(17 pages, 1998)

6. A. Klar, N. Siedow

## ***Boundary Layers and Domain Decomposition for Radiative Heat Transfer and Diffusion Equations: Applications to Glass Manufacturing Processes***

In this paper domain decomposition methods for radiative transfer problems including conductive heat transfer are treated. The paper focuses on semi-transparent materials, like glass, and the associated conditions at the interface between the materials. Using asymptotic analysis we derive conditions for the coupling of the radiative transfer equations and a diffusion approximation. Several test cases are treated and a problem appearing in glass manufacturing processes is computed. The results clearly show the advantages of a domain decomposition approach. Accuracy equivalent to the solution of the global radiative transfer solution is achieved, whereas computation time is strongly reduced.

(24 pages, 1998)

7. I. Choquet

## ***Heterogeneous catalysis modelling and numerical simulation in rarified gas flows Part I: Coverage locally at equilibrium***

A new approach is proposed to model and simulate numerically heterogeneous catalysis in rarefied gas flows. It is developed to satisfy all together the following points:

- 1) describe the gas phase at the microscopic scale, as required in rarefied flows,
- 2) describe the wall at the macroscopic scale, to avoid prohibitive computational costs and consider not only crystalline but also amorphous surfaces,
- 3) reproduce on average macroscopic laws correlated with experimental results and
- 4) derive analytic models in a systematic and exact way. The problem is stated in the general framework of a non static flow in the vicinity of a catalytic and non porous surface (without aging). It is shown that the exact and systematic resolution method based on the Laplace transform, introduced previously by the author to model collisions in the gas phase, can be extended to the present problem. The proposed approach is applied to the modelling of the EleyRideal and LangmuirHinshelwood recombinations, assuming that the coverage is locally at equilibrium. The models are developed considering one atomic species and

extended to the general case of several atomic species. Numerical calculations show that the models derived in this way reproduce with accuracy behaviors observed experimentally.

(24 pages, 1998)

8. J. Ohser, B. Steinbach, C. Lang

## ***Efficient Texture Analysis of Binary Images***

A new method of determining some characteristics of binary images is proposed based on a special linear filtering. This technique enables the estimation of the area fraction, the specific line length, and the specific integral of curvature. Furthermore, the specific length of the total projection is obtained, which gives detailed information about the texture of the image. The influence of lateral and directional resolution depending on the size of the applied filter mask is discussed in detail. The technique includes a method of increasing directional resolution for texture analysis while keeping lateral resolution as high as possible.

(17 pages, 1998)

9. J. Orlik

## ***Homogenization for viscoelasticity of the integral type with aging and shrinkage***

A multiphase composite with periodic distributed inclusions with a smooth boundary is considered in this contribution. The composite component materials are supposed to be linear viscoelastic and aging (of the non-convolution integral type, for which the Laplace transform with respect to time is not effectively applicable) and are subjected to isotropic shrinkage. The free shrinkage deformation can be considered as a fictitious temperature deformation in the behavior law. The procedure presented in this paper proposes a way to determine average (effective homogenized) viscoelastic and shrinkage (temperature) composite properties and the homogenized stressfield from known properties of the components. This is done by the extension of the asymptotic homogenization technique known for pure elastic nonhomogeneous bodies to the nonhomogeneous thermoviscoelasticity of the integral nonconvolution type. Up to now, the homogenization theory has not covered viscoelasticity of the integral type. SanchezPalencia (1980), Francfort & Suquet (1987) (see [2], [9]) have considered homogenization for viscoelasticity of the differential form and only up to the first derivative order. The integralmodeled viscoelasticity is more general than the differential one and includes almost all known differential models. The homogenization procedure is based on the construction of an asymptotic solution with respect to a period of the composite structure. This reduces the original problem to some auxiliary boundary value problems of elasticity and viscoelasticity on the unit periodic cell, of the same type as the original non-homogeneous problem. The existence and uniqueness results for such problems were obtained for kernels satisfying some constrain conditions. This is done by the extension of the Volterra integral operator theory to the Volterra operators with respect to the time, whose 1 kernels are space linear operators for any fixed time variables. Some ideas of such approach were proposed in [11] and [12], where the Volterra operators with kernels depending additionally on parameter were considered. This manuscript delivers results of the same nature for the case of the spaceoperator kernels.

(20 pages, 1998)

10. J. Mohring

## ***Helmholtz Resonators with Large Aperture***

The lowest resonant frequency of a cavity resonator is usually approximated by the classical Helmholtz formula. However, if the opening is rather large and the front wall is narrow this formula is no longer valid. Here we present a correction which is of third order in the ratio of the diameters of aperture and cavity. In addition to the high accuracy it allows to estimate the damping due to radiation. The result is found by applying the method of matched asymptotic expansions. The correction contains form factors describing the shapes of opening and cavity. They are computed for a number of standard geometries. Results are compared with numerical computations.

(21 pages, 1998)

11. H. W. Hamacher, A. Schöbel

### **On Center Cycles in Grid Graphs**

Finding “good” cycles in graphs is a problem of great interest in graph theory as well as in locational analysis. We show that the center and median problems are NP hard in general graphs. This result holds both for the variable cardinality case (i.e. all cycles of the graph are considered) and the fixed cardinality case (i.e. only cycles with a given cardinality  $p$  are feasible). Hence it is of interest to investigate special cases where the problem is solvable in polynomial time. In grid graphs, the variable cardinality case is, for instance, trivially solvable if the shape of the cycle can be chosen freely. If the shape is fixed to be a rectangle one can analyze rectangles in grid graphs with, in sequence, fixed dimension, fixed cardinality, and variable cardinality. In all cases a complete characterization of the optimal cycles and closed form expressions of the optimal objective values are given, yielding polynomial time algorithms for all cases of center rectangle problems. Finally, it is shown that center cycles can be chosen as rectangles for small cardinalities such that the center cycle problem in grid graphs is in these cases completely solved. (15 pages, 1998)

12. H. W. Hamacher, K.-H. Küfer

### **Inverse radiation therapy planning - a multiple objective optimisation approach**

For some decades radiation therapy has been proved successful in cancer treatment. It is the major task of clinical radiation treatment planning to realize on the one hand a high level dose of radiation in the cancer tissue in order to obtain maximum tumor control. On the other hand it is obvious that it is absolutely necessary to keep in the tissue outside the tumor, particularly in organs at risk, the unavoidable radiation as low as possible.

No doubt, these two objectives of treatment planning - high level dose in the tumor, low radiation outside the tumor - have a basically contradictory nature. Therefore, it is no surprise that inverse mathematical models with dose distribution bounds tend to be infeasible in most cases. Thus, there is need for approximations compromising between overdosing the organs at risk and underdosing the target volume.

Differing from the currently used time consuming iterative approach, which measures deviation from an ideal (non-achievable) treatment plan using recursively trial-and-error weights for the organs of interest, we go a new way trying to avoid a priori weight choices and consider the treatment planning problem as a multiple objective linear programming problem: with each organ of interest, target tissue as well as organs at risk, we associate an objective function measuring the maximal deviation from the prescribed doses.

We build up a data base of relatively few efficient solutions representing and approximating the variety of Pareto solutions of the multiple objective linear programming problem. This data base can be easily scanned by physicians looking for an adequate treatment plan with the aid of an appropriate online tool. (14 pages, 1999)

13. C. Lang, J. Ohser, R. Hilfer

### **On the Analysis of Spatial Binary Images**

This paper deals with the characterization of microscopically heterogeneous, but macroscopically homogeneous spatial structures. A new method is presented which is strictly based on integral-geometric formulae such as Crofton's intersection formulae and Hadwiger's recursive definition of the Euler number. The corresponding algorithms have clear advantages over other techniques. As an example of application we consider the analysis of spatial digital images produced by means of Computer Assisted Tomography. (20 pages, 1999)

14. M. Junk

### **On the Construction of Discrete Equilibrium Distributions for Kinetic Schemes**

A general approach to the construction of discrete equilibrium distributions is presented. Such distribution functions can be used to set up Kinetic Schemes as well as Lattice Boltzmann methods. The general prin-

ciples are also applied to the construction of Chapman Enskog distributions which are used in Kinetic Schemes for compressible Navier-Stokes equations. (24 pages, 1999)

15. M. Junk, S. V. Raghurame Rao

### **A new discrete velocity method for Navier-Stokes equations**

The relation between the Lattice Boltzmann Method, which has recently become popular, and the Kinetic Schemes, which are routinely used in Computational Fluid Dynamics, is explored. A new discrete velocity model for the numerical solution of Navier-Stokes equations for incompressible fluid flow is presented by combining both the approaches. The new scheme can be interpreted as a pseudo-compressibility method and, for a particular choice of parameters, this interpretation carries over to the Lattice Boltzmann Method. (20 pages, 1999)

16. H. Neunzert

### **Mathematics as a Key to Key Technologies**

The main part of this paper will consist of examples, how mathematics really helps to solve industrial problems; these examples are taken from our Institute for Industrial Mathematics, from research in the Technomathematics group at my university, but also from ECMI groups and a company called TecMath, which originated 10 years ago from my university group and has already a very successful history. (39 pages (4 PDF-Files), 1999)

17. J. Ohser, K. Sandau

### **Considerations about the Estimation of the Size Distribution in Wickseil's Corpuscle Problem**

Wickseil's corpuscle problem deals with the estimation of the size distribution of a population of particles, all having the same shape, using a lower dimensional sampling probe. This problem was originally formulated for particle systems occurring in life sciences but its solution is of actual and increasing interest in materials science. From a mathematical point of view, Wickseil's problem is an inverse problem where the interesting size distribution is the unknown part of a Volterra equation. The problem is often regarded ill-posed, because the structure of the integrand implies unstable numerical solutions. The accuracy of the numerical solutions is considered here using the condition number, which allows to compare different numerical methods with different (equidistant) class sizes and which indicates, as one result, that a finite section thickness of the probe reduces the numerical problems. Furthermore, the relative error of estimation is computed which can be split into two parts. One part consists of the relative discretization error that increases for increasing class size, and the second part is related to the relative statistical error which increases with decreasing class size. For both parts, upper bounds can be given and the sum of them indicates an optimal class width depending on some specific constants. (18 pages, 1999)

18. E. Carrizosa, H. W. Hamacher, R. Klein, S. Nickel

### **Solving nonconvex planar location problems by finite dominating sets**

It is well-known that some of the classical location problems with polyhedral gauges can be solved in polynomial time by finding a finite dominating set, i.e. a finite set of candidates guaranteed to contain at least one optimal location.

In this paper it is first established that this result holds for a much larger class of problems than currently considered in the literature. The model for which this result can be proven includes, for instance, location problems with attraction and repulsion, and location-allocation problems.

Next, it is shown that the approximation of general gauges by polyhedral ones in the objective function of our general model can be analyzed with regard to the subsequent error in the optimal objective value. For the approximation problem two different approaches are described, the sandwich procedure and the greedy

algorithm. Both of these approaches lead - for fixed epsilon - to polynomial approximation algorithms with accuracy epsilon for solving the general model considered in this paper.

**Keywords:** Continuous Location, Polyhedral Gauges, Finite Dominating Sets, Approximation, Sandwich Algorithm, Greedy Algorithm (19 pages, 2000)

19. A. Becker

### **A Review on Image Distortion Measures**

Within this paper we review image distortion measures. A distortion measure is a criterion that assigns a “quality number” to an image. We distinguish between mathematical distortion measures and those distortion measures in-cooperating a priori knowledge about the imaging devices (e.g. satellite images), image processing algorithms or the human physiology. We will consider representative examples of different kinds of distortion measures and are going to discuss them.

**Keywords:** Distortion measure, human visual system (26 pages, 2000)

20. H. W. Hamacher, M. Labbé, S. Nickel, T. Sonneborn

### **Polyhedral Properties of the Uncapacitated Multiple Allocation Hub Location Problem**

We examine the feasibility polyhedron of the uncapacitated hub location problem (UHL) with multiple allocation, which has applications in the fields of air passenger and cargo transportation, telecommunication and postal delivery services. In particular we determine the dimension and derive some classes of facets of this polyhedron. We develop some general rules about lifting facets from the uncapacitated facility location (UFL) for UHL and projecting facets from UHL to UFL. By applying these rules we get a new class of facets for UHL which dominates the inequalities in the original formulation. Thus we get a new formulation of UHL whose constraints are all facet-defining. We show its superior computational performance by benchmarking it on a well known data set.

**Keywords:** integer programming, hub location, facility location, valid inequalities, facets, branch and cut (21 pages, 2000)

21. H. W. Hamacher, A. Schöbel

### **Design of Zone Tariff Systems in Public Transportation**

Given a public transportation system represented by its stops and direct connections between stops, we consider two problems dealing with the prices for the customers: The fare problem in which subsets of stops are already aggregated to zones and “good” tariffs have to be found in the existing zone system. Closed form solutions for the fare problem are presented for three objective functions. In the zone problem the design of the zones is part of the problem. This problem is NP hard and we therefore propose three heuristics which prove to be very successful in the redesign of one of Germany's transportation systems. (30 pages, 2001)

22. D. Hietel, M. Junk, R. Keck, D. Teleaga

### **The Finite-Volume-Particle Method for Conservation Laws**

In the Finite-Volume-Particle Method (FVPM), the weak formulation of a hyperbolic conservation law is discretized by restricting it to a discrete set of test functions. In contrast to the usual Finite-Volume approach, the test functions are not taken as characteristic functions of the control volumes in a spatial grid, but are chosen from a partition of unity with smooth and overlapping partition functions (the particles), which can even move along pre-scribed velocity fields. The information exchange between particles is based on standard numerical flux functions. Geometrical information, similar to the surface area of the cell faces in the Finite-Volume Method and the corresponding normal directions are given as integral quantities of the partition functions. After a brief derivation of the Finite-Volume-Particle Method, this work focuses on the role of the geometric coefficients in the scheme. (16 pages, 2001)



23. T. Bender, H. Hennes, J. Kalcsics,  
M. T. Melo, S. Nickel

#### **Location Software and Interface with GIS and Supply Chain Management**

The objective of this paper is to bridge the gap between location theory and practice. To meet this objective focus is given to the development of software capable of addressing the different needs of a wide group of users. There is a very active community on location theory encompassing many research fields such as operations research, computer science, mathematics, engineering, geography, economics and marketing. As a result, people working on facility location problems have a very diverse background and also different needs regarding the software to solve these problems. For those interested in non-commercial applications (e. g. students and researchers), the library of location algorithms (LoLA can be of considerable assistance. LoLA contains a collection of efficient algorithms for solving planar, network and discrete facility location problems. In this paper, a detailed description of the functionality of LoLA is presented. In the fields of geography and marketing, for instance, solving facility location problems requires using large amounts of demographic data. Hence, members of these groups (e. g. urban planners and sales managers) often work with geographical information too. To address the specific needs of these users, LoLA was linked to a geographical information system (GIS) and the details of the combined functionality are described in the paper. Finally, there is a wide group of practitioners who need to solve large problems and require special purpose software with a good data interface. Many of such users can be found, for example, in the area of supply chain management (SCM). Logistics activities involved in strategic SCM include, among others, facility location planning. In this paper, the development of a commercial location software tool is also described. The tool is embedded in the Advanced Planner and Optimizer SCM software developed by SAP AG, Walldorf, Germany. The paper ends with some conclusions and an outlook to future activities.

**Keywords:** facility location, software development, geographical information systems, supply chain management (48 pages, 2001)

24. H. W. Hamacher, S. A. Tjandra

#### **Mathematical Modelling of Evacuation Problems: A State of Art**

This paper details models and algorithms which can be applied to evacuation problems. While it concentrates on building evacuation many of the results are applicable also to regional evacuation. All models consider the time as main parameter, where the travel time between components of the building is part of the input and the overall evacuation time is the output. The paper distinguishes between macroscopic and microscopic evacuation models both of which are able to capture the evacuees' movement over time.

Macroscopic models are mainly used to produce good lower bounds for the evacuation time and do not consider any individual behavior during the emergency situation. These bounds can be used to analyze existing buildings or help in the design phase of planning a building. Macroscopic approaches which are based on dynamic network flow models (minimum cost dynamic flow, maximum dynamic flow, universal maximum flow, quickest path and quickest flow) are described. A special feature of the presented approach is the fact, that travel times of evacuees are not restricted to be constant, but may be density dependent. Using multi-criteria optimization priority regions and blockage due to fire or smoke may be considered. It is shown how the modelling can be done using time parameter either as discrete or continuous parameter.

Microscopic models are able to model the individual evacuee's characteristics and the interaction among evacuees which influence their movement. Due to the corresponding huge amount of data one uses simulation approaches. Some probabilistic laws for individual evacuee's movement are presented. Moreover ideas to model the evacuee's movement using cellular automata (CA) and resulting software are presented. In this paper we will focus on macroscopic models and only summarize some of the results of the microscopic

approach. While most of the results are applicable to general evacuation situations, we concentrate on building evacuation. (44 pages, 2001)

25. J. Kuhnert, S. Tiwari

#### **Grid free method for solving the Poisson equation**

A Grid free method for solving the Poisson equation is presented. This is an iterative method. The method is based on the weighted least squares approximation in which the Poisson equation is enforced to be satisfied in every iterations. The boundary conditions can also be enforced in the iteration process. This is a local approximation procedure. The Dirichlet, Neumann and mixed boundary value problems on a unit square are presented and the analytical solutions are compared with the exact solutions. Both solutions matched perfectly.

**Keywords:** Poisson equation, Least squares method, Grid free method (19 pages, 2001)

26. T. Götz, H. Rave, D. Reinelt-Bitzer,  
K. Steiner, H. Tiemeier

#### **Simulation of the fiber spinning process**

To simulate the influence of process parameters to the melt spinning process a fiber model is used and coupled with CFD calculations of the quench air flow. In the fiber model energy, momentum and mass balance are solved for the polymer mass flow. To calculate the quench air the Lattice Boltzmann method is used. Simulations and experiments for different process parameters and hole configurations are compared and show a good agreement.

**Keywords:** Melt spinning, fiber model, Lattice Boltzmann, CFD (19 pages, 2001)

27. A. Zemitis

#### **On interaction of a liquid film with an obstacle**

In this paper mathematical models for liquid films generated by impinging jets are discussed. Attention is stressed to the interaction of the liquid film with some obstacle. S. G. Taylor [Proc. R. Soc. London Ser. A 253, 313 (1959)] found that the liquid film generated by impinging jets is very sensitive to properties of the wire which was used as an obstacle. The aim of this presentation is to propose a modification of the Taylor's model, which allows to simulate the film shape in cases, when the angle between jets is different from 180°. Numerical results obtained by discussed models give two different shapes of the liquid film similar as in Taylor's experiments. These two shapes depend on the regime: either droplets are produced close to the obstacle or not. The difference between two regimes becomes larger if the angle between jets decreases. Existence of such two regimes can be very essential for some applications of impinging jets, if the generated liquid film can have a contact with obstacles.

**Keywords:** impinging jets, liquid film, models, numerical solution, shape (22 pages, 2001)

28. I. Ginzburg, K. Steiner

#### **Free surface lattice-Boltzmann method to model the filling of expanding cavities by Bingham Fluids**

The filling process of viscoplastic metal alloys and plastics in expanding cavities is modelled using the lattice Boltzmann method in two and three dimensions. These models combine the regularized Bingham model for viscoplastic with a free-interface algorithm. The latter is based on a modified immiscible lattice Boltzmann model in which one species is the fluid and the other one is considered as vacuum. The boundary conditions at the curved liquid-vacuum interface are met without any geometrical front reconstruction from a first-order Chapman-Enskog expansion. The numerical results obtained with these models are found in good agreement with available theoretical and numerical analysis. **Keywords:** Generalized LBE, free-surface phenomena,

interface boundary conditions, filling processes, Bingham viscoplastic model, regularized models (22 pages, 2001)

29. H. Neunzert

#### **»Denn nichts ist für den Menschen als Menschen etwas wert, was er nicht mit Leidenschaft tun kann«**

#### **Vortrag anlässlich der Verleihung des Akademiepreises des Landes Rheinland-Pfalz am 21.11.2001**

Was macht einen guten Hochschullehrer aus? Auf diese Frage gibt es sicher viele verschiedene, fachbezogene Antworten, aber auch ein paar allgemeine Gesichtspunkte: es bedarf der »Leidenschaft« für die Forschung (Max Weber), aus der dann auch die Begeisterung für die Lehre erwächst. Forschung und Lehre gehören zusammen, um die Wissenschaft als lebendiges Tun vermitteln zu können. Der Vortrag gibt Beispiele dafür, wie in angewandter Mathematik Forschungsaufgaben aus praktischen Alltagsproblemstellungen erwachsen, die in die Lehre auf verschiedenen Stufen (Gymnasium bis Graduiertenkolleg) einfließen; er leitet damit auch zu einem aktuellen Forschungsgebiet, der Mehrskalenanalyse mit ihren vielfältigen Anwendungen in Bildverarbeitung, Materialentwicklung und Strömungsmechanik über, was aber nur kurz gestreift wird. Mathematik erscheint hier als eine moderne Schlüsseltechnologie, die aber auch enge Beziehungen zu den Geistes- und Sozialwissenschaften hat.

**Keywords:** Lehre, Forschung, angewandte Mathematik, Mehrskalenanalyse, Strömungsmechanik (18 pages, 2001)

30. J. Kuhnert, S. Tiwari

#### **Finite pointset method based on the projection method for simulations of the incompressible Navier-Stokes equations**

A Lagrangian particle scheme is applied to the projection method for the incompressible Navier-Stokes equations. The approximation of spatial derivatives is obtained by the weighted least squares method. The pressure Poisson equation is solved by a local iterative procedure with the help of the least squares method. Numerical tests are performed for two dimensional cases. The Couette flow, Poiseuille flow, decaying shear flow and the driven cavity flow are presented. The numerical solutions are obtained for stationary as well as instationary cases and are compared with the analytical solutions for channel flows. Finally, the driven cavity in a unit square is considered and the stationary solution obtained from this scheme is compared with that from the finite element method.

**Keywords:** Incompressible Navier-Stokes equations, Meshfree method, Projection method, Particle scheme, Least squares approximation  
**AMS subject classification:** 76D05, 76M28 (25 pages, 2001)

31. R. Korn, M. Krekel

#### **Optimal Portfolios with Fixed Consumption or Income Streams**

We consider some portfolio optimisation problems where either the investor has a desire for an a priori specified consumption stream or/and follows a deterministic pay in scheme while also trying to maximize expected utility from final wealth. We derive explicit closed form solutions for continuous and discrete monetary streams. The mathematical method used is classical stochastic control theory.

**Keywords:** Portfolio optimisation, stochastic control, HJB equation, discretisation of control problems. (23 pages, 2002)

32. M. Krekel

#### **Optimal portfolios with a loan dependent credit spread**

If an investor borrows money he generally has to pay higher interest rates than he would have received, if he had put his funds on a savings account. The classical model of continuous time portfolio optimisation ignores this effect. Since there is obviously a connection between the default probability and the total

percentage of wealth, which the investor is in debt, we study portfolio optimisation with a control dependent interest rate. Assuming a logarithmic and a power utility function, respectively, we prove explicit formulae of the optimal control.

*Keywords: Portfolio optimisation, stochastic control, HJB equation, credit spread, log utility, power utility, non-linear wealth dynamics*  
(25 pages, 2002)

33. J. Ohser, W. Nagel, K. Schladitz

### **The Euler number of discretized sets - on the choice of adjacency in homogeneous lattices**

Two approaches for determining the Euler-Poincaré characteristic of a set observed on lattice points are considered in the context of image analysis { the integral geometric and the polyhedral approach. Information about the set is assumed to be available on lattice points only. In order to retain properties of the Euler number and to provide a good approximation of the true Euler number of the original set in the Euclidean space, the appropriate choice of adjacency in the lattice for the set and its background is crucial. Adjacencies are defined using tessellations of the whole space into polyhedrons. In  $\mathbb{R}^3$ , two new 14 adjacencies are introduced additionally to the well known 6 and 26 adjacencies. For the Euler number of a set and its complement, a consistency relation holds. Each of the pairs of adjacencies (14:1; 14:1), (14:2; 14:2), (6; 26), and (26; 6) is shown to be a pair of complementary adjacencies with respect to this relation. That is, the approximations of the Euler numbers are consistent if the set and its background (complement) are equipped with this pair of adjacencies. Furthermore, sufficient conditions for the correctness of the approximations of the Euler number are given. The analysis of selected microstructures and a simulation study illustrate how the estimated Euler number depends on the chosen adjacency. It also shows that there is not a uniquely best pair of adjacencies with respect to the estimation of the Euler number of a set in Euclidean space.

*Keywords: image analysis, Euler number, neighborhood relationships, cuboidal lattice*  
(32 pages, 2002)

34. I. Ginzburg, K. Steiner

### **Lattice Boltzmann Model for Free-Surface flow and Its Application to Filling Process in Casting**

A generalized lattice Boltzmann model to simulate free-surface is constructed in both two and three dimensions. The proposed model satisfies the interfacial boundary conditions accurately. A distinctive feature of the model is that the collision processes is carried out only on the points occupied partially or fully by the fluid. To maintain a sharp interfacial front, the method includes an anti-diffusion algorithm. The unknown distribution functions at the interfacial region are constructed according to the first order Chapman-Enskog analysis. The interfacial boundary conditions are satisfied exactly by the coefficients in the Chapman-Enskog expansion. The distribution functions are naturally expressed in the local interfacial coordinates. The macroscopic quantities at the interface are extracted from the least-square solutions of a locally linearized system obtained from the known distribution functions. The proposed method does not require any geometric front construction and is robust for any interfacial topology. Simulation results of realistic filling process are presented: rectangular cavity in two dimensions and Hammer box, Campbell box, Sheffield box, and Motorblock in three dimensions. To enhance the stability at high Reynolds numbers, various upwind-type schemes are developed. Free-slip and no-slip boundary conditions are also discussed.

*Keywords: Lattice Boltzmann models; free-surface phenomena; interface boundary conditions; filling processes; injection molding; volume of fluid method; interface boundary conditions; advection-schemes; upwind-schemes*  
(54 pages, 2002)

35. M. Günther, A. Klar, T. Materne, R. Wegener

### **Multivalued fundamental diagrams and stop and go waves for continuum traffic equations**

In the present paper a kinetic model for vehicular traffic leading to multivalued fundamental diagrams is developed and investigated in detail. For this model phase transitions can appear depending on the local density and velocity of the flow. A derivation of associated macroscopic traffic equations from the kinetic equation is given. Moreover, numerical experiments show the appearance of stop and go waves for high-way traffic with a bottleneck.

*Keywords: traffic flow, macroscopic equations, kinetic derivation, multivalued fundamental diagram, stop and go waves, phase transitions*  
(25 pages, 2002)

36. S. Feldmann, P. Lang, D. Prätzel-Wolters

### **Parameter influence on the zeros of network determinants**

To a network  $N(q)$  with determinant  $D(s;q)$  depending on a parameter vector  $q \in \mathbb{R}^r$  via identification of some of its vertices, a network  $N^\wedge(q)$  is assigned. The paper deals with procedures to find  $N^\wedge(q)$ , such that its determinant  $D^\wedge(s;q)$  admits a factorization in the determinants of appropriate subnetworks, and with the estimation of the deviation of the zeros of  $D^\wedge$  from the zeros of  $D$ . To solve the estimation problem state space methods are applied.

*Keywords: Networks, Equicofactor matrix polynomials, Realization theory, Matrix perturbation theory*  
(30 pages, 2002)

37. K. Koch, J. Ohser, K. Schladitz

### **Spectral theory for random closed sets and estimating the covariance via frequency space**

A spectral theory for stationary random closed sets is developed and provided with a sound mathematical basis. Definition and proof of existence of the Bartlett spectrum of a stationary random closed set as well as the proof of a Wiener-Khintchine theorem for the power spectrum are used to two ends: First, well known second order characteristics like the covariance can be estimated faster than usual via frequency space. Second, the Bartlett spectrum and the power spectrum can be used as second order characteristics in frequency space. Examples show, that in some cases information about the random closed set is easier to obtain from these characteristics in frequency space than from their real world counterparts.

*Keywords: Random set, Bartlett spectrum, fast Fourier transform, power spectrum*  
(28 pages, 2002)

38. D. d'Humières, I. Ginzburg

### **Multi-reflection boundary conditions for lattice Boltzmann models**

We present a unified approach of several boundary conditions for lattice Boltzmann models. Its general framework is a generalization of previously introduced schemes such as the bounce-back rule, linear or quadratic interpolations, etc. The objectives are two fold: first to give theoretical tools to study the existing boundary conditions and their corresponding accuracy; secondly to design formally third-order accurate boundary conditions for general flows. Using these boundary conditions, Couette and Poiseuille flows are exact solution of the lattice Boltzmann models for a Reynolds number  $Re = 0$  (Stokes limit).

Numerical comparisons are given for Stokes flows in periodic arrays of spheres and cylinders, linear periodic array of cylinders between moving plates and for Navier-Stokes flows in periodic arrays of cylinders for  $Re < 200$ . These results show a significant improvement of the overall accuracy when using the linear interpolations instead of the bounce-back reflection (up to an order of magnitude on the hydrodynamics fields). Further improvement is achieved with the new multi-reflection boundary conditions, reaching a

level of accuracy close to the quasi-analytical reference solutions, even for rather modest grid resolutions and few points in the narrowest channels. More important, the pressure and velocity fields in the vicinity of the obstacles are much smoother with multi-reflection than with the other boundary conditions.

Finally the good stability of these schemes is highlighted by some simulations of moving obstacles: a cylinder between flat walls and a sphere in a cylinder.

*Keywords: lattice Boltzmann equation, boundary conditions, bounce-back rule, Navier-Stokes equation*  
(72 pages, 2002)

39. R. Korn

### **Elementare Finanzmathematik**

Im Rahmen dieser Arbeit soll eine elementar gehaltene Einführung in die Aufgabenstellungen und Prinzipien der modernen Finanzmathematik gegeben werden. Insbesondere werden die Grundlagen der Modellierung von Aktienkursen, der Bewertung von Optionen und der Portfolio-Optimierung vorgestellt. Natürlich können die verwendeten Methoden und die entwickelte Theorie nicht in voller Allgemeinheit für den Schulunterricht verwendet werden, doch sollen einzelne Prinzipien so herausgearbeitet werden, dass sie auch an einfachen Beispielen verstanden werden können.

*Keywords: Finanzmathematik, Aktien, Optionen, Portfolio-Optimierung, Börse, Lehrerweiterbildung, Mathematikunterricht*  
(98 pages, 2002)

40. J. Kallrath, M. C. Müller, S. Nickel

### **Batch Presorting Problems: Models and Complexity Results**

In this paper we consider short term storage systems. We analyze presorting strategies to improve the efficiency of these storage systems. The presorting task is called Batch PreSorting Problem (BPSP). The BPSP is a variation of an assignment problem, i.e., it has an assignment problem kernel and some additional constraints. We present different types of these presorting problems, introduce mathematical programming formulations and prove the NP-completeness for one type of the BPSP. Experiments are carried out in order to compare the different model formulations and to investigate the behavior of these models.

*Keywords: Complexity theory, Integer programming, Assignment, Logistics*  
(19 pages, 2002)

41. J. Linn

### **On the frame-invariant description of the phase space of the Folgar-Tucker equation**

The Folgar-Tucker equation is used in flow simulations of fiber suspensions to predict fiber orientation depending on the local flow. In this paper, a complete, frame-invariant description of the phase space of this differential equation is presented for the first time.

*Key words: fiber orientation, Folgar-Tucker equation, injection molding*  
(5 pages, 2003)

42. T. Hanne, S. Nickel

### **A Multi-Objective Evolutionary Algorithm for Scheduling and Inspection Planning in Software Development Projects**

In this article, we consider the problem of planning inspections and other tasks within a software development (SD) project with respect to the objectives quality (no. of defects), project duration, and costs. Based on a discrete-event simulation model of SD processes comprising the phases coding, inspection, test, and rework, we present a simplified formulation of the problem as a multiobjective optimization problem. For solving the problem (i.e. finding an approximation of the efficient set) we develop a multiobjective evolutionary algorithm. Details of the algorithm are discussed as well as results of its application to sample problems.

*Key words: multiple objective programming, project management and scheduling, software development, evolutionary algorithms, efficient set*  
(29 pages, 2003)

43. T. Bortfeld, J. Küfer, M. Monz, A. Scherrer, C. Thieke, H. Trinka

#### **Intensity-Modulated Radiotherapy - A Large Scale Multi-Criteria Programming Problem -**

Radiation therapy planning is always a tight rope walk between dangerous insufficient dose in the target volume and life threatening overdosing of organs at risk. Finding ideal balances between these inherently contradictory goals challenges dosimetrists and physicians in their daily practice. Today's planning systems are typically based on a single evaluation function that measures the quality of a radiation treatment plan. Unfortunately, such a one dimensional approach cannot satisfactorily map the different backgrounds of physicians and the patient dependent necessities. So, too often a time consuming iteration process between evaluation of dose distribution and redefinition of the evaluation function is needed.

In this paper we propose a generic multi-criteria approach based on Pareto's solution concept. For each entity of interest - target volume or organ at risk a structure dependent evaluation function is defined measuring deviations from ideal doses that are calculated from statistical functions. A reasonable bunch of clinically meaningful Pareto optimal solutions are stored in a data base, which can be interactively searched by physicians. The system guarantees dynamical planning as well as the discussion of tradeoffs between different entities.

Mathematically, we model the upcoming inverse problem as a multi-criteria linear programming problem. Because of the large scale nature of the problem it is not possible to solve the problem in a 3D-setting without adaptive reduction by appropriate approximation schemes.

Our approach is twofold: First, the discretization of the continuous problem is based on an adaptive hierarchical clustering process which is used for a local refinement of constraints during the optimization procedure. Second, the set of Pareto optimal solutions is approximated by an adaptive grid of representatives that are found by a hybrid process of calculating extreme compromises and interpolation methods.

*Keywords: multiple criteria optimization, representative systems of Pareto solutions, adaptive triangulation, clustering and disaggregation techniques, visualization of Pareto solutions, medical physics, external beam radiotherapy planning, intensity modulated radiotherapy*  
(31 pages, 2003)

44. T. Halfmann, T. Wichmann

#### **Overview of Symbolic Methods in Industrial Analog Circuit Design**

Industrial analog circuits are usually designed using numerical simulation tools. To obtain a deeper circuit understanding, symbolic analysis techniques can additionally be applied. Approximation methods which reduce the complexity of symbolic expressions are needed in order to handle industrial-sized problems. This paper will give an overview to the field of symbolic analog circuit analysis. Starting with a motivation, the state-of-the-art simplification algorithms for linear as well as for nonlinear circuits are presented. The basic ideas behind the different techniques are described, whereas the technical details can be found in the cited references. Finally, the application of linear and nonlinear symbolic analysis will be shown on two example circuits.

*Keywords: CAD, automated analog circuit design, symbolic analysis, computer algebra, behavioral modeling, system simulation, circuit sizing, macro modeling, differential-algebraic equations, index*  
(17 pages, 2003)

45. S. E. Mikhailov, J. Orlik

#### **Asymptotic Homogenisation in Strength and Fatigue Durability Analysis of Composites**

Asymptotic homogenisation technique and two-scale convergence is used for analysis of macro-strength and fatigue durability of composites with a periodic structure under cyclic loading. The linear damage accumulation rule is employed in the phenomenologi-

cal micro-durability conditions (for each component of the composite) under varying cyclic loading. Both local and non-local strength and durability conditions are analysed. The strong convergence of the strength and fatigue damage measure as the structure period tends to zero is proved and their limiting values are estimated.  
*Keywords: multiscale structures, asymptotic homogenization, strength, fatigue, singularity, non-local conditions*  
(14 pages, 2003)

46. P. Domínguez-Marín, P. Hansen, N. Mladenović, S. Nickel

#### **Heuristic Procedures for Solving the Discrete Ordered Median Problem**

We present two heuristic methods for solving the Discrete Ordered Median Problem (DOMP), for which no such approaches have been developed so far. The DOMP generalizes classical discrete facility location problems, such as the p-median, p-center and Uncapacitated Facility Location problems. The first procedure proposed in this paper is based on a genetic algorithm developed by Moreno Vega [MV96] for p-median and p-center problems. Additionally, a second heuristic approach based on the Variable Neighborhood Search metaheuristic (VNS) proposed by Hansen & Mladenović [HM97] for the p-median problem is described. An extensive numerical study is presented to show the efficiency of both heuristics and compare them.

*Keywords: genetic algorithms, variable neighborhood search, discrete facility location*  
(31 pages, 2003)

47. N. Boland, P. Domínguez-Marín, S. Nickel, J. Puerto

#### **Exact Procedures for Solving the Discrete Ordered Median Problem**

The Discrete Ordered Median Problem (DOMP) generalizes classical discrete location problems, such as the N-median, N-center and Uncapacitated Facility Location problems. It was introduced by Nickel [16], who formulated it as both a nonlinear and a linear integer program. We propose an alternative integer linear programming formulation for the DOMP, discuss relationships between both integer linear programming formulations, and show how properties of optimal solutions can be used to strengthen these formulations. Moreover, we present a specific branch and bound procedure to solve the DOMP more efficiently. We test the integer linear programming formulations and this branch and bound method computationally on randomly generated test problems.

*Keywords: discrete location, Integer programming*  
(41 pages, 2003)

48. S. Feldmann, P. Lang

#### **Padé-like reduction of stable discrete linear systems preserving their stability**

A new stability preserving model reduction algorithm for discrete linear SISO-systems based on their impulse response is proposed. Similar to the Padé approximation, an equation system for the Markov parameters involving the Hankel matrix is considered, that here however is chosen to be of very high dimension. Although this equation system therefore in general cannot be solved exactly, it is proved that the approximate solution, computed via the Moore-Penrose inverse, gives rise to a stability preserving reduction scheme, a property that cannot be guaranteed for the Padé approach. Furthermore, the proposed algorithm is compared to another stability preserving reduction approach, namely the balanced truncation method, showing comparable performance of the reduced systems. The balanced truncation method however starts from a state space description of the systems and in general is expected to be more computational demanding.

*Keywords: Discrete linear systems, model reduction, stability, Hankel matrix, Stein equation*  
(16 pages, 2003)

49. J. Kallrath, S. Nickel

#### **A Polynomial Case of the Batch Presorting Problem**

This paper presents new theoretical results for a special case of the batch presorting problem (BPSP). We will show that this case can be solved in polynomial time. Offline and online algorithms are presented for solving the BPSP. Competitive analysis is used for comparing the algorithms.

*Keywords: batch presorting problem, online optimization, competitive analysis, polynomial algorithms, logistics*  
(17 pages, 2003)

50. T. Hanne, H. L. Trinka

#### **knowCube for MCDM – Visual and Interactive Support for Multicriteria Decision Making**

In this paper, we present a novel multicriteria decision support system (MCDSS), called knowCube, consisting of components for knowledge organization, generation, and navigation. Knowledge organization rests upon a database for managing qualitative and quantitative criteria, together with add-on information. Knowledge generation serves filling the database via e.g. identification, optimization, classification or simulation. For "finding needles in haystacks", the knowledge navigation component supports graphical database retrieval and interactive, goal-oriented problem solving. Navigation "helpers" are, for instance, cascading criteria aggregations, modifiable metrics, ergonomic interfaces, and customizable visualizations. Examples from real-life projects, e.g. in industrial engineering and in the life sciences, illustrate the application of our MCDSS.

*Key words: Multicriteria decision making, knowledge management, decision support systems, visual interfaces, interactive navigation, real-life applications.*  
(26 pages, 2003)

51. O. Iliev, V. Laptev

#### **On Numerical Simulation of Flow Through Oil Filters**

This paper concerns numerical simulation of flow through oil filters. Oil filters consist of filter housing (filter box), and a porous filtering medium, which completely separates the inlet from the outlet. We discuss mathematical models, describing coupled flows in the pure liquid subregions and in the porous filter media, as well as interface conditions between them. Further, we reformulate the problem in fictitious regions method manner, and discuss peculiarities of the numerical algorithm in solving the coupled system. Next, we show numerical results, validating the model and the algorithm. Finally, we present results from simulation of 3-D oil flow through a real car filter.

*Keywords: oil filters, coupled flow in plain and porous media, Navier-Stokes, Brinkman, numerical simulation*  
(8 pages, 2003)

52. W. Dörfler, O. Iliev, D. Stoyanov, D. Vassileva

#### **On a Multigrid Adaptive Refinement Solver for Saturated Non-Newtonian Flow in Porous Media**

A multigrid adaptive refinement algorithm for non-Newtonian flow in porous media is presented. The saturated flow of a non-Newtonian fluid is described by the continuity equation and the generalized Darcy law. The resulting second order nonlinear elliptic equation is discretized by a finite volume method on a cell-centered grid. A nonlinear full-multigrid, full-approximation-storage algorithm is implemented. As a smoother, a single grid solver based on Picard linearization and Gauss-Seidel relaxation is used. Further, a local refinement multigrid algorithm on a composite grid is developed. A residual based error indicator is used in the adaptive refinement criterion. A special implementation approach is used, which allows us to perform unstructured local refinement in conjunction with the finite volume discretization. Several results from numerical experiments are presented in order to examine the performance of the solver.

*Keywords: Nonlinear multigrid, adaptive refinement, non-Newtonian flow in porous media*  
(17 pages, 2003)



53. S. Kruse

### ***On the Pricing of Forward Starting Options under Stochastic Volatility***

We consider the problem of pricing European forward starting options in the presence of stochastic volatility. By performing a change of measure using the asset price at the time of strike determination as a numeraire, we derive a closed-form solution based on Heston's model of stochastic volatility.

*Keywords: Option pricing, forward starting options, Heston model, stochastic volatility, cliquet options* (11 pages, 2003)

54. O. Iliev, D. Stoyanov

### ***Multigrid – adaptive local refinement solver for incompressible flows***

A non-linear multigrid solver for incompressible Navier-Stokes equations, exploiting finite volume discretization of the equations, is extended by adaptive local refinement. The multigrid is the outer iterative cycle, while the SIMPLE algorithm is used as a smoothing procedure. Error indicators are used to define the refinement subdomain. A special implementation approach is used, which allows to perform unstructured local refinement in conjunction with the finite volume discretization. The multigrid - adaptive local refinement algorithm is tested on 2D Poisson equation and further is applied to a lid-driven flows in a cavity (2D and 3D case), comparing the results with bench-mark data. The software design principles of the solver are also discussed.

*Keywords: Navier-Stokes equations, incompressible flow, projection-type splitting, SIMPLE, multigrid methods, adaptive local refinement, lid-driven flow in a cavity* (37 pages, 2003)

55. V. Starikovicius

### ***The multiphase flow and heat transfer in porous media***

In first part of this work, summaries of traditional Multiphase Flow Model and more recent Multiphase Mixture Model are presented. Attention is being paid to attempts include various heterogeneous aspects into models. In second part, MMM based differential model for two-phase immiscible flow in porous media is considered. A numerical scheme based on the sequential solution procedure and control volume based finite difference schemes for the pressure and saturation-conservation equations is developed. A computer simulator is built, which exploits object-oriented programming techniques. Numerical result for several test problems are reported.

*Keywords: Two-phase flow in porous media, various formulations, global pressure, multiphase mixture model, numerical simulation* (30 pages, 2003)

56. P. Lang, A. Sarishvili, A. Wirsén

### ***Blocked neural networks for knowledge extraction in the software development process***

One of the main goals of an organization developing software is to increase the quality of the software while at the same time to decrease the costs and the duration of the development process. To achieve this, various decisions affecting this goal before and during the development process have to be made by the managers. One appropriate tool for decision support are simulation models of the software life cycle, which also help to understand the dynamics of the software development process. Building up a simulation model requires a mathematical description of the interactions between different objects involved in the development process. Based on experimental data, techniques from the field of knowledge discovery can be used to quantify these interactions and to generate new process knowledge based on the analysis of the determined relationships. In this paper blocked neuronal networks and related relevance measures will be presented as an appropriate tool for quantification and validation of qualitatively known dependencies in the software development process.

*Keywords: Blocked Neural Networks, Nonlinear Regression, Knowledge Extraction, Code Inspection* (21 pages, 2003)

57. H. Knaf, P. Lang, S. Zeiser

### ***Diagnosis aiding in Regulation Thermography using Fuzzy Logic***

The objective of the present article is to give an overview of an application of Fuzzy Logic in Regulation Thermography, a method of medical diagnosis support. An introduction to this method of the complementary medical science based on temperature measurements – so-called thermograms – is provided. The process of modelling the physician's thermogram evaluation rules using the calculus of Fuzzy Logic is explained.

*Keywords: fuzzy logic, knowledge representation, expert system* (22 pages, 2003)

58. M.T. Melo, S. Nickel, F. Saldanha da Gama

### ***Largescale models for dynamic multi-commodity capacitated facility location***

In this paper we focus on the strategic design of supply chain networks. We propose a mathematical modeling framework that captures many practical aspects of network design problems simultaneously but which have not received adequate attention in the literature. The aspects considered include: dynamic planning horizon, generic supply chain network structure, external supply of materials, inventory opportunities for goods, distribution of commodities, facility configuration, availability of capital for investments, and storage limitations. Moreover, network configuration decisions concerning the gradual relocation of facilities over the planning horizon are considered. To cope with fluctuating demands, capacity expansion and reduction scenarios are also analyzed as well as modular capacity shifts. The relation of the proposed modeling framework with existing models is discussed. For problems of reasonable size we report on our computational experience with standard mathematical programming software. In particular, useful insights on the impact of various factors on network design decisions are provided.

*Keywords: supply chain management, strategic planning, dynamic location, modeling* (40 pages, 2003)

59. J. Orlik

### ***Homogenization for contact problems with periodically rough surfaces***

We consider the contact of two elastic bodies with rough surfaces at the interface. The size of the micro-peaks and valleys is very small compared with the macroscale of the bodies' domains. This makes the direct application of the FEM for the calculation of the contact problem prohibitively costly. A method is developed that allows deriving a macrocontact condition on the interface. The method involves the two-scale asymptotic homogenization procedure that takes into account the microgeometry of the interface layer and the stiffnesses of materials of both domains. The macrocontact condition can then be used in a FEM model for the contact problem on the macrolevel. The averaged contact stiffness obtained allows the replacement of the interface layer in the macromodel by the macrocontact condition.

*Keywords: asymptotic homogenization, contact problems* (28 pages, 2004)

60. A. Scherrer, K.-H. Küfer, M. Monz, F. Alonso, T. Bortfeld

### ***IMRT planning on adaptive volume structures – a significant advance of computational complexity***

In intensity-modulated radiotherapy (IMRT) planning the oncologist faces the challenging task of finding a treatment plan that he considers to be an ideal compromise of the inherently contradictory goals of delivering a sufficiently high dose to the target while widely sparing critical structures. The search for this a priori unknown compromise typically requires the computation of several plans, i.e. the solution of several optimization problems. This accumulates to a high computational expense due to the large scale of these problems – a consequence of the discrete problem formulation. This paper presents the adaptive clustering method as a new algorithmic concept to overcome these difficulties.

The computations are performed on an individually adapted structure of voxel clusters rather than on the original voxels leading to a decisively reduced computational complexity as numerical examples on real clinical data demonstrate. In contrast to many other similar concepts, the typical trade-off between a reduction in computational complexity and a loss in exactness can be avoided: the adaptive clustering method produces the optimum of the original problem. This flexible method can be applied to both single- and multi-criteria optimization methods based on most of the convex evaluation functions used in practice.

*Keywords: Intensity-modulated radiation therapy (IMRT), inverse treatment planning, adaptive volume structures, hierarchical clustering, local refinement, adaptive clustering, convex programming, mesh generation, multi-grid methods* (24 pages, 2004)

61. D. Kehrwald

### ***Parallel lattice Boltzmann simulation of complex flows***

After a short introduction to the basic ideas of lattice Boltzmann methods and a brief description of a modern parallel computer, it is shown how lattice Boltzmann schemes are successfully applied for simulating fluid flow in microstructures and calculating material properties of porous media. It is explained how lattice Boltzmann schemes compute the gradient of the velocity field without numerical differentiation. This feature is then utilised for the simulation of pseudo-plastic fluids, and numerical results are presented for a simple benchmark problem as well as for the simulation of liquid composite moulding.

*Keywords: Lattice Boltzmann methods, parallel computing, microstructure simulation, virtual material design, pseudo-plastic fluids, liquid composite moulding* (12 pages, 2004)

62. O. Iliev, J. Linn, M. Moog, D. Niedziela, V. Starikovicius

### ***On the Performance of Certain Iterative Solvers for Coupled Systems Arising in Discretization of Non-Newtonian Flow Equations***

Iterative solution of large scale systems arising after discretization and linearization of the unsteady non-Newtonian Navier–Stokes equations is studied. cross WLF model is used to account for the non-Newtonian behavior of the fluid. Finite volume method is used to discretize the governing system of PDEs. Viscosity is treated explicitly (e.g., it is taken from the previous time step), while other terms are treated implicitly. Different preconditioners (block-diagonal, block-triangular, relaxed incomplete LU factorization, etc.) are used in conjunction with advanced iterative methods, namely, BiCGStab, CGS, GMRES. The action of the preconditioner in fact requires inverting different blocks. For this purpose, in addition to preconditioned BiCGStab, CGS, GMRES, we use also algebraic multigrid method (AMG). The performance of the iterative solvers is studied with respect to the number of unknowns, characteristic velocity in the basic flow, time step, deviation from Newtonian behavior, etc. Results from numerical experiments are presented and discussed.

*Keywords: Performance of iterative solvers, Preconditioners, Non-Newtonian flow* (17 pages, 2004)

63. R. Ciegis, O. Iliev, S. Rief, K. Steiner

### ***On Modelling and Simulation of Different Regimes for Liquid Polymer Moulding***

In this paper we consider numerical algorithms for solving a system of nonlinear PDEs arising in modeling of liquid polymer injection. We investigate the particular case when a porous preform is located within the mould, so that the liquid polymer flows through a porous medium during the filling stage. The nonlinearity of the governing system of PDEs is due to the non-Newtonian behavior of the polymer, as well as due to the moving free boundary. The latter is related to the penetration front and a Stefan type problem is formulated to account for it. A finite-volume method is used



to approximate the given differential problem. Results of numerical experiments are presented.

We also solve an inverse problem and present algorithms for the determination of the absolute preform permeability coefficient in the case when the velocity of the penetration front is known from measurements. In both cases (direct and inverse problems) we emphasize on the specifics related to the non-Newtonian behavior of the polymer. For completeness, we discuss also the Newtonian case. Results of some experimental measurements are presented and discussed.

**Keywords:** *Liquid Polymer Moulding, Modelling, Simulation, Infiltration, Front Propagation, non-Newtonian flow in porous media* (43 pages, 2004)

64. T. Hanne, H. Neu

### **Simulating Human Resources in Software Development Processes**

In this paper, we discuss approaches related to the explicit modeling of human beings in software development processes. While in most older simulation models of software development processes, esp. those of the system dynamics type, humans are only represented as a labor pool, more recent models of the discrete-event simulation type require representations of individual humans. In that case, particularities regarding the person become more relevant. These individual effects are either considered as stochastic variations of productivity, or an explanation is sought based on individual characteristics, such as skills for instance. In this paper, we explore such possibilities by recurring to some basic results in psychology, sociology, and labor science. Various specific models for representing human effects in software process simulation are discussed.

**Keywords:** *Human resource modeling, software process, productivity, human factors, learning curve* (14 pages, 2004)

65. O. Iliev, A. Mikelic, P. Popov

### **Fluid structure interaction problems in deformable porous media: Toward permeability of deformable porous media**

In this work the problem of fluid flow in deformable porous media is studied. First, the stationary fluid-structure interaction (FSI) problem is formulated in terms of incompressible Newtonian fluid and a linearized elastic solid. The flow is assumed to be characterized by very low Reynolds number and is described by the Stokes equations. The strains in the solid are small allowing for the solid to be described by the Lamé equations, but no restrictions are applied on the magnitude of the displacements leading to strongly coupled, nonlinear fluid-structure problem. The FSI problem is then solved numerically by an iterative procedure which solves sequentially fluid and solid subproblems. Each of the two subproblems is discretized by finite elements and the fluid-structure coupling is reduced to an interface boundary condition. Several numerical examples are presented and the results from the numerical computations are used to perform permeability computations for different geometries.

**Keywords:** *fluid-structure interaction, deformable porous media, upscaling, linear elasticity, stokes, finite elements* (28 pages, 2004)

66. F. Gaspar, O. Iliev, F. Lisbona, A. Naumovich, P. Vabishchevich

### **On numerical solution of 1-D poroelasticity equations in a multilayered domain**

Finite volume discretization of Biot system of poroelasticity in a multilayered domain is presented. Staggered grid is used in order to avoid nonphysical oscillations of the numerical solution, appearing when a collocated grid is used. Various numerical experiments are presented in order to illustrate the accuracy of the finite difference scheme. In the first group of experiments, problems having analytical solutions are solved, and the order of convergence for the velocity, the pressure, the displacements, and the stresses is analyzed. In the second group of experiments numerical solution of real problems is presented.

**Keywords:** *poroelasticity, multilayered material, finite volume discretization, MAC type grid* (41 pages, 2004)

67. J. Ohser, K. Schladitz, K. Koch, M. Nöthe

### **Diffraction by image processing and its application in materials science**

A spectral theory for constituents of macroscopically homogeneous random microstructures modeled as homogeneous random closed sets is developed and provided with a sound mathematical basis, where the spectrum obtained by Fourier methods corresponds to the angular intensity distribution of x-rays scattered by this constituent. It is shown that the fast Fourier transform applied to three-dimensional images of microstructures obtained by micro-tomography is a powerful tool of image processing. The applicability of this technique is demonstrated in the analysis of images of porous media.

**Keywords:** *porous microstructure, image analysis, random set, fast Fourier transform, power spectrum, Bartlett spectrum* (13 pages, 2004)

68. H. Neunzert

### **Mathematics as a Technology: Challenges for the next 10 Years**

No doubt: Mathematics has become a technology in its own right, maybe even a key technology. Technology may be defined as the application of science to the problems of commerce and industry. And science? Science maybe defined as developing, testing and improving models for the prediction of system behavior; the language used to describe these models is mathematics and mathematics provides methods to evaluate these models. Here we are! Why has mathematics become a technology only recently? Since it got a tool, a tool to evaluate complex, "near to reality" models: Computer! The model may be quite old – Navier-Stokes equations describe flow behavior rather well, but to solve these equations for realistic geometry and higher Reynolds numbers with sufficient precision is even for powerful parallel computing a real challenge. Make the models as simple as possible, as complex as necessary – and then evaluate them with the help of efficient and reliable algorithms: These are genuine mathematical tasks. **Keywords:** *applied mathematics, technology, modelling, simulation, visualization, optimization, glass processing, spinning processes, fiber-fluid interaction, turbulence effects, topological optimization, multicriteria optimization, Uncertainty and Risk, financial mathematics, Malliavin calculus, Monte-Carlo methods, virtual material design, filtration, bio-informatics, system biology* (29 pages, 2004)

69. R. Ewing, O. Iliev, R. Lazarov, A. Naumovich

### **On convergence of certain finite difference discretizations for 1D poroelasticity interface problems**

Finite difference discretizations of 1D poroelasticity equations with discontinuous coefficients are analyzed. A recently suggested FD discretization of poroelasticity equations with constant coefficients on staggered grid, [5], is used as a basis. A careful treatment of the interfaces leads to harmonic averaging of the discontinuous coefficients. Here, convergence for the pressure and for the displacement is proven in certain norms for the scheme with harmonic averaging (HA). Order of convergence 1.5 is proven for arbitrary located interface, and second order convergence is proven for the case when the interface coincides with a grid node. Furthermore, following the ideas from [3], modified HA discretization are suggested for particular cases. The velocity and the stress are approximated with second order on the interface in this case. It is shown that for wide class of problems, the modified discretization provides better accuracy. Second order convergence for modified scheme is proven for the case when the interface coincides with a displacement grid node. Numerical experiments are presented in order to illustrate our considerations.

**Keywords:** *poroelasticity, multilayered material, finite volume discretizations, MAC type grid, error estimates* (26 pages, 2004)

70. W. Dörfler, O. Iliev, D. Stoyanov, D. Vassileva

### **On Efficient Simulation of Non-Newtonian Flow in Saturated Porous Media with a Multigrid Adaptive Refinement Solver**

Flow of non-Newtonian in saturated porous media can be described by the continuity equation and the generalized Darcy law. Efficient solution of the resulting second order nonlinear elliptic equation is discussed here. The equation is discretized by a finite volume method on a cell-centered grid. Local adaptive refinement of the grid is introduced in order to reduce the number of unknowns. A special implementation approach is used, which allows us to perform unstructured local refinement in conjunction with the finite volume discretization. Two residual based error indicators are exploited in the adaptive refinement criterion. Second order accurate discretization on the interfaces between refined and non-refined subdomains, as well as on the boundaries with Dirichlet boundary condition, are presented here, as an essential part of the accurate and efficient algorithm. A nonlinear full approximation storage multigrid algorithm is developed especially for the above described composite (coarse plus locally refined) grid approach. In particular, second order approximation around interfaces is a result of a quadratic approximation of slave nodes in the multigrid - adaptive refinement (MG-AR) algorithm. Results from numerical solution of various academic and practice-induced problems are presented and the performance of the solver is discussed.

**Keywords:** *Nonlinear multigrid, adaptive refinement, non-Newtonian in porous media* (25 pages, 2004)

71. J. Kalcsics, S. Nickel, M. Schröder

### **Towards a Unified Territory Design Approach – Applications, Algorithms and GIS Integration**

Territory design may be viewed as the problem of grouping small geographic areas into larger geographic clusters called territories in such a way that the latter are acceptable according to relevant planning criteria. In this paper we review the existing literature for applications of territory design problems and solution approaches for solving these types of problems. After identifying features common to all applications we introduce a basic territory design model and present in detail two approaches for solving this model: a classical location-allocation approach combined with optimal split resolution techniques and a newly developed computational geometry based method. We present computational results indicating the efficiency and suitability of the latter method for solving large-scale practical problems in an interactive environment. Furthermore, we discuss extensions to the basic model and its integration into Geographic Information Systems.

**Keywords:** *territory design, political districting, sales territory alignment, optimization algorithms, Geographical Information Systems* (40 pages, 2005)

72. K. Schladitz, S. Peters, D. Reinelt-Bitzer, A. Wiegmann, J. Ohser

### **Design of acoustic trim based on geometric modeling and flow simulation for non-woven**

In order to optimize the acoustic properties of a stacked fiber non-woven, the microstructure of the non-woven is modeled by a macroscopically homogeneous random system of straight cylinders (tubes). That is, the fibers are modeled by a spatially stationary random system of lines (Poisson line process), dilated by a sphere. Pressing the non-woven causes anisotropy. In our model, this anisotropy is described by a one parametric distribution of the direction of the fibers. In the present application, the anisotropy parameter has to be estimated from 2d reflected light microscopic images of microsections of the non-woven.

After fitting the model, the flow is computed in digitized realizations of the stochastic geometric model using the lattice Boltzmann method. Based on the flow resistivity, the formulas of Delany and Bazley predict the frequency-dependent acoustic absorption of the non-woven in the impedance tube.

Using the geometric model, the description of a non-woven with improved acoustic absorption properties is obtained in the following way: First, the fiber thicknesses, porosity and anisotropy of the fiber system are modified. Then the flow and acoustics simulations are performed in the new sample. These two steps are repeated for various sets of parameters. Finally, the set of parameters for the geometric model leading to the best acoustic absorption is chosen.

**Keywords:** random system of fibers, Poisson line process, flow resistivity, acoustic absorption, Lattice-Boltzmann method, non-woven  
(21 pages, 2005)

73. V. Rutka, A. Wiegmann

**Explicit Jump Immersed Interface Method for virtual material design of the effective elastic moduli of composite materials**

Virtual material design is the microscopic variation of materials in the computer, followed by the numerical evaluation of the effect of this variation on the material's macroscopic properties. The goal of this procedure is an in some sense improved material. Here, we give examples regarding the dependence of the effective elastic moduli of a composite material on the geometry of the shape of an inclusion. A new approach on how to solve such interface problems avoids mesh generation and gives second order accurate results even in the vicinity of the interface.

The Explicit Jump Immersed Interface Method is a finite difference method for elliptic partial differential equations that works on an equidistant Cartesian grid in spite of non-grid aligned discontinuities in equation parameters and solution. Near discontinuities, the standard finite difference approximations are modified by adding correction terms that involve jumps in the function and its derivatives. This work derives the correction terms for two dimensional linear elasticity with piecewise constant coefficients, i.e. for composite materials. It demonstrates numerically convergence and approximation properties of the method.

**Keywords:** virtual material design, explicit jump immersed interface method, effective elastic moduli, composite materials  
(22 pages, 2005)

74. T. Hanne

**Eine Übersicht zum Scheduling von Baustellen**

Im diesem Dokument werden Aspekte der formalen zeitlichen Planung bzw. des Scheduling für Bauprojekte anhand ausgewählter Literatur diskutiert. Auf allgemeine Aspekte des Scheduling soll dabei nicht eingegangen werden. Hierzu seien als Standard-Referenzen nur Brucker (2004) und Pinedo (1995) genannt. Zu allgemeinen Fragen des Projekt-Managements sei auf Kerzner (2003) verwiesen.

Im Abschnitt 1 werden einige Anforderungen und Besonderheiten der Planung von Baustellen diskutiert. Diese treten allerdings auch in zahlreichen anderen Bereichen der Produktionsplanung und des Projektmanagements auf. In Abschnitt 2 werden dann Aspekte zur Formalisierung von Scheduling-Problemen in der Bauwirtschaft diskutiert, insbesondere Ziele und zu berücksichtigende Restriktionen. Auf eine mathematische Formalisierung wird dabei allerdings verzichtet. Abschnitt 3 bietet eine Übersicht über Verfahren und grundlegende Techniken für die Berechnung von Schedules. In Abschnitt 4 wird ein Überblick über vorhandene Software, zum einen verbreitete Internationale Software, zum anderen deutschsprachige Branchenlösungen, gegeben. Anschließend werden Schlussfolgerungen gezogen und es erfolgt eine Auflistung der Literaturquellen.

**Keywords:** Projektplanung, Scheduling, Bauplanung, Bauindustrie  
(32 pages, 2005)

75. J. Linn

**The Folgar–Tucker Model as a Differential Algebraic System for Fiber Orientation Calculation**

The Folgar–Tucker equation (FTE) is the model most frequently used for the prediction of fiber orientation (FO) in simulations of the injection molding process for short-fiber reinforced thermoplasts. In contrast to its

widespread use in injection molding simulations, little is known about the mathematical properties of the FTE: an investigation of e.g. its phase space  $M_{FT}$  has been presented only recently [12]. The restriction of the dependent variable of the FTE to the set  $M_{FT}$  turns the FTE into a differential algebraic system (DAS), a fact which is commonly neglected when devising numerical schemes for the integration of the FTE. In this article we present some recent results on the problem of trace stability as well as some introductory material which complements our recent paper [12].

**Keywords:** fiber orientation, Folgar–Tucker model, invariants, algebraic constraints, phase space, trace stability  
(15 pages, 2005)

76. M. Speckert, K. Dreßler, H. Mauch, A. Lion, G. J. Wierda

**Simulation eines neuartigen Prüfsystems für Achserproben durch MKS-Modellierung einschließlich Regelung**

Testing new suspensions based on real load data is performed on elaborate multi channel test rigs. Usually, wheel forces and moments measured during driving maneuvers are reproduced by the test rig. Because of the complicated interaction between test rig and suspension each new rig configuration has to prove its efficiency with respect to the requirements and the configuration might be subject to optimization.

This paper deals with mathematical and physical modeling of a new concept of a test rig which is based on two hexapods. The model contains the geometric configuration as well as the hydraulics and the controller. It is implemented as an ADAMS/Car template and can be combined with different suspension models to get a complete assembly representing the entire test rig. Using this model, all steps required for a real test run such as controller adaptation, drive file iteration and simulation can be performed. Geometric or hydraulic parameters can be modified easily to improve the setup and adapt the system to the suspension and the given load data.

The model supports and accompanies the introduction of the new rig concept and can be used to prepare real tests on a virtual basis. Using both a front and a rear suspension the approach is described and the potentials coming with the simulation are pointed out.

**Keywords:** virtual test rig, suspension testing, multi-body simulation, modeling hexapod test rig, optimization of test rig configuration  
(20 pages, 2005)

In deutscher Sprache; bereits erschienen in: VDI-Berichte Nr. 1900, VDI-Verlag GmbH Düsseldorf (2005), Seiten 227-246

77. K.-H. Küfer, M. Monz, A. Scherrer, P. Süß, F. Alonso, A. S. A. Sultan, Th. Bortfeld, D. Craft, Chr. Thieke

**Multicriteria optimization in intensity modulated radiotherapy planning**

Inverse treatment planning of intensity modulated radiotherapy is a multicriteria optimization problem: planners have to find optimal compromises between a sufficiently highdose intumor tissuethat garantuee a high tumor control, and, dangerous overdosing of critical structures, in order to avoid high normal tissue complication problems.

The approach presented in this work demonstrates how to state a flexible generic multicriteria model of the IMRT planning problem and how to produce clinically highly relevant Pareto-solutions. The model is imbedded in a principal concept of Reverse Engineering, a general optimization paradigm for design problems. Relevant parts of the Pareto-set are approximated by using extreme compromises as cornerstone solutions, a concept that is always feasible if box constraints for objective funtions are available. A major practical drawback of generic multicriteria concepts trying to compute or approximate parts of the Pareto-set is the high computational effort. This problem can be overcome by exploitation of an inherent asymmetry of the IMRT planning problem and an adaptive approximation scheme for optimal solutions based on an adaptive clustering preprocessing technique. Finally, a coherent approach for calculating and selecting solutions in a real-timeinteractive decision-making process is presented. The paper is concluded with clinical examples

and a discussion of ongoing research topics.

**Keywords:** multicriteria optimization, extreme solutions, real-time decision making, adaptive approximation schemes, clustering methods, IMRT planning, reverse engineering  
(51 pages, 2005)

78. S. Amstutz, H. Andrä

**A new algorithm for topology optimization using a level-set method**

The levelset method has been recently introduced in the field of shape optimization, enabling a smooth representation of the boundaries on a fixed mesh and therefore leading to fast numerical algorithms. However, most of these algorithms use a HamiltonJacobi equation to connect the evolution of the levelset function with the deformation of the contours, and consequently they cannot create any new holes in the domain (at least in 2D). In this work, we propose an evolution equation for the levelset function based on a generalization of the concept of topological gradient. This results in a new algorithm allowing for all kinds of topology changes.

**Keywords:** shape optimization, topology optimization, topological sensitivity, level-set  
(22 pages, 2005)

79. N. Ettrich

**Generation of surface elevation models for urban drainage simulation**

Traditional methods fail for the purpose of simulating the complete flow process in urban areas as a consequence of heavy rainfall and as required by the European Standard EN-752 since the bi-directional coupling between sewer and surface is not properly handled. The methodology, developed in the BMBF/EUREKA-project RiUrSim, solves this problem by carrying out the runoff on the basis of shallow water equations solved on high-resolution surface grids. Exchange nodes between the sewer and the surface, like inlets and manholes, are located in the computational grid and water leaving the sewer in case of surcharge is further distributed on the surface.

So far, it has been a problem to get the dense topographical information needed to build models suitable for hydrodynamic runoff calculation in urban areas. Recent airborne data collection methods like laser scanning, however, offer a great chance to economically gather densely sampled input data. This paper studies the potential of such laser-scan data sets for urban water hydrodynamics.

**Keywords:** Flooding, simulation, urban elevation models, laser scanning  
(22 pages, 2005)

80. H. Andrä, J. Linn, I. Matei, I. Shklyar, K. Steiner, E. Teichmann

**OPTCAST – Entwicklung adäquater Strukturoptimierungsverfahren für Gießereien Technischer Bericht (KURZFASSUNG)**

Im vorliegenden Bericht werden die Erfahrungen und Ergebnisse aus dem Projekt OptCast zusammengestellt. Das Ziel dieses Projekts bestand (a) in der Anpassung der Methodik der automatischen Strukturoptimierung für Gussteile und (b) in der Entwicklung und Bereitstellung von gießereispezifischen Optimierungstools für Gießereien und Ingenieurbüros.

Gießtechnische Restriktionen lassen sich nicht auf geometrische Restriktionen reduzieren, sondern sind nur über eine Gießsimulation (Erstarrungssimulation und Eigenspannungsanalyse) adäquat erfassbar, da die lokalen Materialeigenschaften des Gussteils nicht nur von der geometrischen Form des Teils, sondern auch vom verwendeten Material abhängen. Wegen dieser Erkenntnis wurde ein neuartiges iteratives Topologieoptimierungsverfahren unter Verwendung der Level-Set-Technik entwickelt, bei dem keine variable Dichte des Materials eingeführt wird. In jeder Iteration wird ein scharfer Rand des Bauteils berechnet. Somit ist die Gießsimulation in den iterativen Optimierungsprozess integrierbar.

Der Bericht ist wie folgt aufgebaut: In Abschnitt 2 wird der Anforderungskatalog erläutert, der sich aus der Bearbeitung von Benchmark-Problemen in der ersten Projektphase ergab. In Abschnitt 3 werden die Benchmark-Probleme und deren Lösung mit den im Projekt

entwickelten Tools beschrieben. Abschnitt 4 enthält die Beschreibung der neu entwickelten Schnittstellen und die mathematische Formulierung des Topologieoptimierungsproblems. Im letzten Abschnitt wird das neue Topologieoptimierungsverfahren, das die Simulation des Gießprozesses einschließt, erläutert.

*Keywords: Topologieoptimierung, Level-Set-Methode, Gießprozesssimulation, Gießtechnische Restriktionen, CAE-Kette zur Strukturoptimierung*  
(77 pages, 2005)

81. N. Marheineke, R. Wegener

### ***Fiber Dynamics in Turbulent Flows***

#### ***Part I: General Modeling Framework***

The paper at hand deals with the modeling of turbulence effects on the dynamics of a long slender elastic fiber. Independent of the choice of the drag model, a general aerodynamic force concept is derived on the basis of the velocity field for the randomly fluctuating component of the flow. Its construction as centered differentiable Gaussian field complies thereby with the requirements of the stochastic  $k$ - $\varepsilon$  turbulence model and Kolmogorov's universal equilibrium theory on local isotropy.

*Keywords: fiber-fluid interaction; Cosserat rod; turbulence modeling; Kolmogorov's energy spectrum; double-velocity correlations; differentiable Gaussian fields*

#### ***Part II: Specific Taylor Drag***

In [12], an aerodynamic force concept for a general air drag model is derived on top of a stochastic  $k$ - $\varepsilon$  description for a turbulent flow field. The turbulence effects on the dynamics of a long slender elastic fiber are particularly modeled by a correlated random Gaussian force and in its asymptotic limit on a macroscopic fiber scale by Gaussian white noise with flow-dependent amplitude. The paper at hand now presents quantitative similarity estimates and numerical comparisons for the concrete choice of a Taylor drag model in a given application.

*Keywords: flexible fibers; k-ε turbulence model; fiber-turbulence interaction scales; air drag; random Gaussian aerodynamic force; white noise; stochastic differential equations; ARMA process*  
(38 pages, 2005)

Status quo: September 2005